

## FIELD REPORT

ADDRESS COWI Marine North America  
20 East Clementon Rd.  
Suite 201N  
Gibbsboro, NJ 08026

TITLE Stone Harbor Maintenance Dredging  
DATE 20 January 2016  
TO Jill Gougher  
COPY MADN  
FROM BEWI  
PROJECT NO A06772

TEL 856-248-1200  
FAX 856-248-1206  
WWW cowi-na.com

PAGE 1/11

### Project Information

**Owner:** The Borough of Stone Harbor  
**Contractor:** Severson Environmental Services, Inc.

### Daily Site Visit Information

**Purpose of Visit:** Observation of work in progress

**Contractor:** Severson Environmental Services, Inc. **Superintendent:** Douglas Pike

### Arrival

**Time (HHMM):** 0600 **Weather:**  Sunny  Clear  Overcast  Rain  Snow  
**Air Temp (°F):** 23 **Wind:**  Light  Moderate  High **Humidity:**  Dry  Moderate  Humid

### Departure

**Time (HHMM):** 1430 **Weather:**  Sunny  Clear  Overcast  Rain  Snow  
**Air Temp (°F):** 31 **Wind:**  Light  Moderate  High **Humidity:**  Dry  Moderate  Humid

### Site Locations:

**Field Office:** **Construction Personnel On Site:** 2-3  
**Equipment on Site (Standby or Operating):** Operational – Office Trailers (x2)  
**Observations:** Sevensons personnel working in trailers.

**North Basin:** **Construction Personnel On Site:** 0  
**Equipment on Site (Standby or Operating):** Standby – Excavator, Boat (x3), Dredge barge  
**Observations:** Dredging operations on standby.

**De-watering Area:** **Construction Personnel On Site:** 10-11  
**Equipment on Site (Standby or Operating):** Operational – Sump Pump (x4), Filtration System, Front End Loader, Excavator (x4), Skid-steer, Geobags (x8), De-sanding Plant, Standby - Cement Silo  
**Observations:** De-watering operation on standby. Sand-blending operation in progress.

**Actions to be Taken:** No actions at this time.

**Enclosures:** Photographs

## Photographs



Photograph 1: De-watering area – Equipment loading sand into bags to block boat ramp. (Looking northwest)



Photograph 2: De-watering area – De-sanding plant on standby. (Looking west)



*Photograph 3: De-watering area – Sand bags to block storm surge. (Looking south)*



*Photograph 4: De-watering area – Blended material staged for removal. (Looking southwest)*



*Photograph 5: De-watering area – Blended material staged for removal. (Looking west)*



*Photograph 6: De-watering area – Blended material staged for removal. (Looking west)*



Photograph 7: De-watering area – Discharge pipes on standby. (Looking west)



Photograph 8: De-watering area – Filtration system on standby. (Looking northwest)



*Photograph 9: De-watering area – Blended material staged for removal. (Looking east)*



*Photograph 10: De-watering area – Sump pump on standby. (Looking west)*



*Photograph 11: De-watering area – Sand-blending operations in progress. (Looking west)*



*Photograph 12: De-watering area – Sand-blending operations in progress. (Looking southwest)*





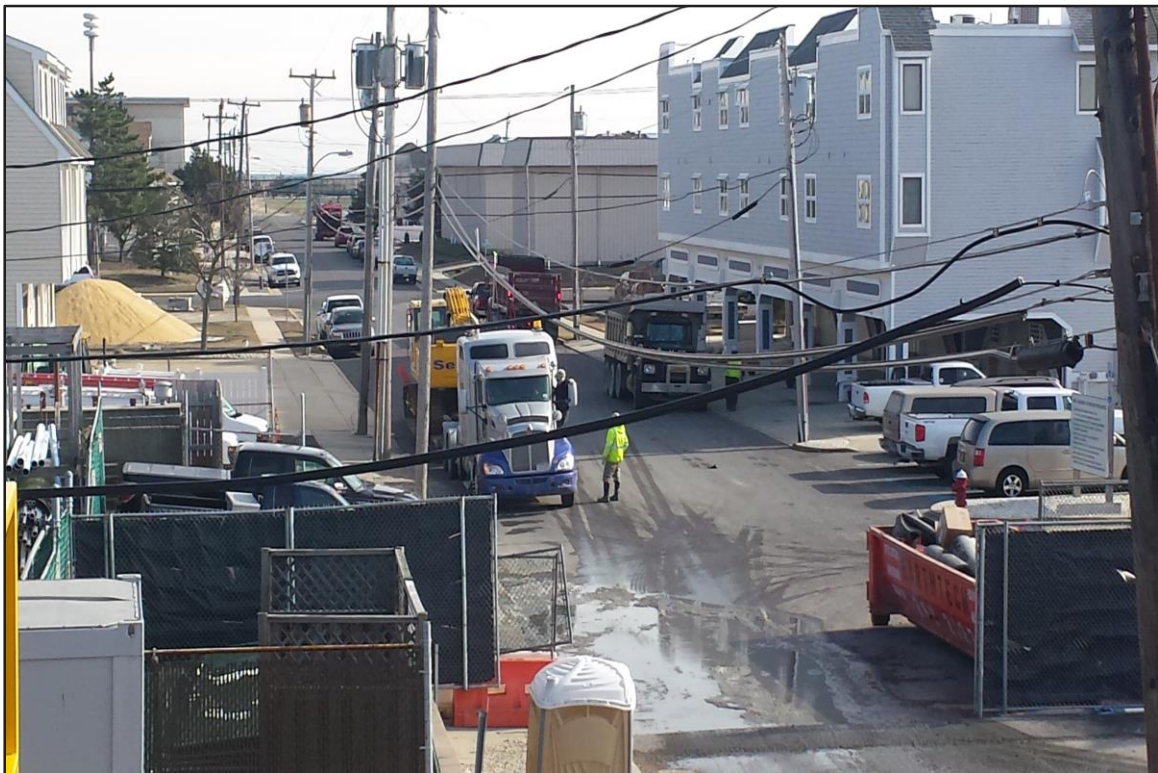
*Photograph 13: De-watering area – Sand-blending operations in progress. (Looking west)*



*Photograph 14: De-watering area – Geobags on standby. (Looking northwest)*



*Photograph 15: De-watering area – Blended material staged for removal. (Background, Looking south)*



*Photograph 16: Site entrance – Sand delivery trucks queue and an additional excavator is delivered. (Looking east)*



*Photograph 17: De-watering area – Sand-blending operations in progress. (Looking west)*