



Weather  
**High** 64  
**Low** 51  
Precipitation  
**0.00**

Reports No.  
**21**

Project No.  
**1145**

Report Date:  
**10/12/16**

Day of Week:  
**Wednesday**



## Daily Progress Report

Copyright 2005, Severson Environmental Services, Inc.  
All Rights Reserved. ©

Weather Conditions:

Clear



**1** Pushing the dredge into position to remove material



**2** Removing material from the South Basin



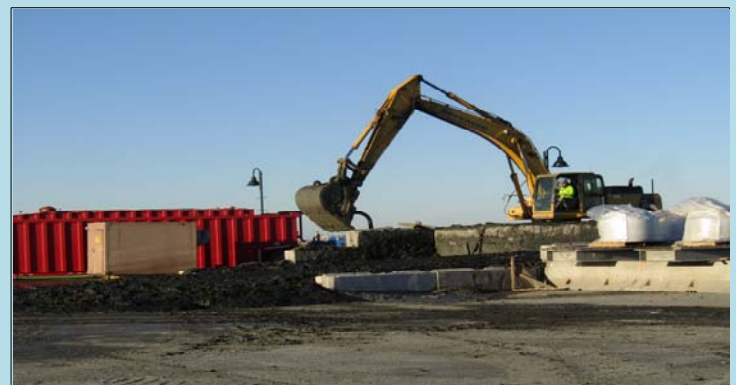
**3** Removing material within the silt curtain moon pool



**4** Loading a scow with dredge material



**5** Adding portland cement to solidify dredge material



**6** Loading out dredge material blended with portland cement to the material staging bins

### Work Performed by Severson

- Continued communication with residents regarding residential slip dredging
- Continued survey of resident boat slips
- Continued dredging the south basin
- Continued blending dredge material with Portland Cement
- Continued staging blended dredge material in anticipation of disposal
- Continued checking dredge depth using a lead line
- Continued noise level monitoring activities

### Work Performed by Subcontractors

- None

### Equipment/Materials Delivered to Site

- FOR A LIST OF EQUIPMENT RECEIVED TODAY PLEASE SEE PAGE 3

### Weekly Summary

| Date                 |     | Dredge QTY (CY) | Disposal QTY (Tns) |
|----------------------|-----|-----------------|--------------------|
| 10/10/16             | Mon | 610             | --                 |
| 10/11/16             | Tue | 871             | --                 |
| 10/12/16             | Wed | 494             | --                 |
| 10/13/16             | Thu | --              | --                 |
| 10/14/16             | Fri | --              | --                 |
| 10/15/16             | Sat | --              | --                 |
| 10/16/16             | Sun | --              | --                 |
| <b>Weekly Totals</b> |     | <b>1,975 CY</b> | <b>0 Tns</b>       |

### Safety Remarks

- No accidents or incidents observed or reported.
- Conducted daily safety meeting: Equipment inspections.

### Remarks/Verbal Directives

- None

### Planned Activities

- Continue survey of residential slips for residential slip dredging
- Perform a self check bathymetric survey of the dredge area in the South Basin
- Severson has scheduled Hydrographic Survey to perform a contractor check bathymetric survey in the South Basin on Friday, 10/14/16

### Other Information

- None

### Production Tables

| Disposal     | Kinsley     | Cape Mining | Beach | Other | Other | Total       | Unit        |
|--------------|-------------|-------------|-------|-------|-------|-------------|-------------|
| Today        | 0.00        |             |       |       |       | 0.00        | Tons        |
| Previous     | 0           |             |       |       |       | 0.00        | Tons        |
| <b>Total</b> | <b>0.00</b> |             |       |       |       | <b>0.00</b> | <b>Tons</b> |

| Dredging               | Available Pay (CY) | Quantity Data Source | Dredged Today (CY) | Dredged To Date (CY) | % Complete |
|------------------------|--------------------|----------------------|--------------------|----------------------|------------|
| South Basin            | 3,992              | 2016 BD Survey       | 494                | 2986                 | 75%        |
| Snug Harbor            | 8,468              | 2016 BD Survey       | 0                  | 0                    | 0%         |
| Shelter Haven Entrance | 1,600              | 2016 BD Survey       | 0                  | 0                    | 0%         |
| Stone Harbor           | 4,165              | 2016 BD Survey       | 0                  | 0                    | 0%         |
| Pleasure Bay           | 11,000             | Contract Bid Sheet   | 0                  | 0                    | 0%         |
| Carnival Bay           | 20,000             | Contract Bid Sheet   | 0                  | 0                    | 0%         |
| Sanctuary Bay          | 13,000             | Contract Bid Sheet   | 0                  | 0                    | 0%         |
| Paradise Bay           | 9,000              | Contract Bid Sheet   | 0                  | 0                    | 0%         |
| Access Channel         | 7,000              | Contract Bid Sheet   | 0                  | 0                    | 0%         |
| Stone Harbor Hole      | 4,000              | Contract Bid Sheet   | 0                  | 0                    | 0%         |
| <b>TOTALS</b>          | <b>82,225</b>      |                      | <b>494</b>         | <b>2,986</b>         | <b>4%</b>  |

\* Volumes include Required and Allowable Pay Overdepth \*\*100% Complete when approved by Owner

## Sevenson Equipment List

| SES Equipment # | Make/Model          | Description                   | Date Onsite | Hrs | Qty |
|-----------------|---------------------|-------------------------------|-------------|-----|-----|
| 526-E           | JCB Lodall          | Telescoping Forklift          | 9/12/2016   |     | 1   |
| 840-E           | JCB Lodall          | Telescoping Forklift          | 9/13/2016   |     | 1   |
| BB24420         | Seabox              | Seabox                        | 9/13/2016   |     | 1   |
| 1243-E          | Sennebogen 860      | Material Handler              | 9/13/2016   |     | 1   |
| 1246-1B         | Anvil 4Cy Clamshell | Clamshell Bucket              | 9/13/2016   |     | 1   |
| 1057-E          | Cat 950 Loader      | Loader                        | 9/14/2016   |     | 1   |
| PF7-127RCT      | Poseidon Barge 40'  | 40'x10'x7' Barge              | 9/14/2016   |     | 1   |
| PF7-179QCT      | Poseidon Barge 40'  | 40'x10'x7' Barge              | 9/14/2016   |     | 1   |
| 247B008         | Poseidon Barge 40'  | 40'x10'x7' Barge              | 9/14/2016   |     | 1   |
| PF7-128RCT      | Poseidon Barge 40'  | 40'x10'x7' Barge              | 9/14/2016   |     | 1   |
| 990EC           | Shakerton Barge 40' | 40'x10'x5' Barge              | 9/14/2016   |     | 1   |
| 019917          | Shakerton Barge 40' | 40'x10'x5' Barge              | 9/14/2016   |     | 1   |
| J-111-E         | Shakerton Barge 40' | 40'x10'x5' Barge              | 9/14/2016   |     | 1   |
| 990EJ           | Shakerton Barge 40' | 40'x10'x5' Barge              | 9/14/2016   |     | 1   |
| 019919          | Shakerton Barge 40' | 40'x10'x5' Barge              | 9/14/2016   |     | 1   |
| 990ER           | Shakerton Barge 40' | 40'x10'x5' Barge              | 9/14/2016   |     | 1   |
| 8721-E          | Bumblebee Boat      | Push Boat                     | 9/14/2016   |     | 1   |
| PF2713QC        | Poseidon Barge 20'  | 20'x10'x5' Barge              | 9/15/2016   |     | 1   |
| PF27132QCT      | Poseidon Barge 20'  | 20'x10'x5' Barge              | 9/15/2016   |     | 1   |
| 227B006         | Poseidon Barge 20'  | 20'x10'x5' Barge              | 9/15/2016   |     | 1   |
| 227B033         | Poseidon Barge 20'  | 20'x10'x5' Barge              | 9/15/2016   |     | 1   |
| 247B034         | Poseidon Barge 40'  | 40'x10'x7' Barge              | 9/15/2016   |     | 1   |
| 247C134         | Poseidon Barge 40'  | 40'x10'x7' Barge              | 9/15/2016   |     | 1   |
| P114Q           | Poseidon Barge 40'  | 40'x10'x5' Barge              | 9/15/2016   |     | 1   |
| 990Ea           | Shakerton Barge 40' | 40'x10'x5' Barge              | 9/15/2016   |     | 1   |
| 9928            | Shakerton Barge 40' | 40'x10'x5' Barge              | 9/15/2016   |     | 1   |
| 996EB           | Shakerton Barge 40' | 40'x10'x5' Barge              | 9/15/2016   |     | 1   |
| 996EG           | Shakerton Barge 40' | 40'x10'x5' Barge              | 9/15/2016   |     | 1   |
| 9649            | Shakerton Barge 20' | 40'x10'x5' Barge              | 9/15/2016   |     | 1   |
| 9947            | Shakerton Barge 20' | 40'x10'x5' Barge              | 9/15/2016   |     | 1   |
| 9648            | Shakerton Barge 20' | 40'x10'x5' Barge              | 9/15/2016   |     | 1   |
| 9650            | Shakerton Barge 20' | 40'x10'x5' Barge              | 9/15/2016   |     | 1   |
| 234056          | Seabox              | Seabox                        | 9/15/2016   |     | 1   |
| 1706-E          | Tugboat             | Shirley Tugboat               | 9/15/2016   |     | 1   |
| 1050-E          | JCB 190 Skid Steer  | Rubber Tire Skid Steer        | 9/15/2016   |     | 1   |
| 835-E           | IR 185 Compressor   | Air Compressor 185            | 9/15/2016   |     | 1   |
| 1405-E          | XQ60 Generator      | Generator XQ60                | 9/15/2016   |     | 1   |
| 1246-16         | Sennebogen 860      | Material Handler              | 9/16/2016   |     | 1   |
| 1458-E          | Bag Filter Housing  | Bag Filter Housing            | 9/20/2016   |     | 1   |
| 1716-E          | Bag Filter Housing  | Bag Filter Housing            | 9/20/2016   |     | 1   |
| 1673-E          | Bag Filter Housing  | Bag Filter Housing            | 9/20/2016   |     | 1   |
| 1718-E          | Bag Filter Housing  | Bag Filter Housing            | 9/20/2016   |     | 1   |
| 1674-E          | Bag Filter Housing  | Bag Filter Housing            | 9/20/2016   |     | 1   |
| 1762-E          | Bag Filter Housing  | Bag Filter Housing            | 9/20/2016   |     | 1   |
| 1318-E          | Triumph 21' Boat    | Boat                          | 9/20/2016   |     | 1   |
| 670-E           | Terex RL 400 Light  | Light Plant                   | 9/20/2016   |     | 1   |
| 1848-E          | Komatsu PC 350 Ex   | PC 350 Excavator              | 9/20/2016   |     | 1   |
| 1206-E          | Genie Light Tower   | Genie Light Tower / Generator | 9/21/2016   |     | 1   |
| 999-E           | Terex RL 400 Light  | Light Plant                   | 9/21/2016   |     | 1   |
| 1085-E          | Cat 966 Loader      | Cat 966 Front End Loader      | 9/21/2016   |     | 1   |
| RAKE ENDS       | BARGE RAKE ENDS     | BARGE RAKE ENDS               | 9/23/2016   |     | 2   |
| 1657-E          | Dredge Tender       | DSC Dredge Tender             | 9/23/2016   |     | 1   |
| 1720-83         | 7 Bells Tug         | 7 Bells Tugboat               | 10/6/2016   |     | 1   |
|                 |                     |                               |             |     |     |
|                 |                     |                               |             |     |     |



