



Weather
High 45
Low 31
 Precipitation
0.00

Reports No.
69

Project No.
1145

Report Date:
12/16/16

Day of Week:
Friday



**Daily
 Progress Report**

Copyright 2005, Severson Environmental Services, Inc.
 All Rights Reserved. ©

Weather Conditions:

Clear



1 Both machines dredging in the Access Channel



2 Sennebogen dredging hard sandy material in the Access Channel



3 Tug Boat landing a scow to be unloaded at the bulkhead



4 PC-350 mixing dredge material with Portland cement



5 Pushing an empty scow to the Access Channel



6 Tender boat assisting the Sennebogen barge in a move

Work Performed by Severson

- Continued communication with residents regarding residential slip dredging
- Continued survey of resident boat slips
- Continued blending dredge material with Portland Cement
- Continued staging blended dredge material in anticipation of disposal
- Continued noise level monitoring activities
- Continued dust monitoring activities
- Continued dredging in the Access Channel
- Continued Dredging in Pleasure Bay

- Sennebogen removed 400 cys from the Access Channel
- Sennebogen removed 77 cys from Pleasure Bay
- PC-400 removed 396 cys from the Access Channel
- Disposed of 949 tons from the Access Channel to Cape Mining Landfill

Weekly Summary

Date		Dredge QTY (CY)	Disposal QTY (Tns)
12/12/16	Mon	--	1,181
12/13/16	Tue	1,101	1,432
12/14/16	Wed	1,180	1,731
12/15/16	Thu	--	1,474
12/16/16	Fri	873	949
12/17/16	Sat	--	--
12/18/16	Sun	--	--
Weekly Totals		3,154 CY	6,767 Tns

Safety Remarks

- No accidents or incidents observed or reported.
- Conducted daily safety meeting: Proper PPE

Remarks/Verbal Directives

- None

Work Performed by Subcontractors

Planned Activities

- Continue survey of residential slips for residential slip dredging
- Continue load out of dredge material
- Continue dredging in the Access Channel
- Continue dredging in Pleasure Bay

Equipment/Materials Delivered to Site

- FOR A LIST OF EQUIPMENT RECEIVED TODAY PLEASE SEE PAGE 3

Other Information

Production Tables

Disposal	Kinsley	Cape Mining	Beach	Other	Other	Total	Unit
Today	0	949				949	Tons
Previous	4,667	39,001				43,668	Tons
Total	4,667	39,950				44,617	Tons

Dredging	Available Pay (CY)	Quantity Data Source	Dredged Today (CY)	Dredged To Date (CY)	% Complete
South Basin	4,862	2016 AD Survey	0	3,385	100%
Snug Harbor	9,445	2016 AD Survey	0	6,153	100%
Shelter Haven Entrance	1,834	2016 AD Survey	0	1,303	100%
Stone Harbor	4,878	2016 AD Survey	0	3662	100%
Pleasure Bay	10,184	Contract Bid Sheet	77	3276	32%
Carnival Bay	15,874	Contract Bid Sheet	0	0	0%
Sanctuary Bay	16,391	Contract Bid Sheet	0	0	0%
Paradise Bay	10,517	Contract Bid Sheet	0	0	0%
Access Channel	20,875	Contract Bid Sheet	796	11133	53%
Stone Harbor Hole	0	Contract Bid Sheet	0	0	0%
Tuxedo Cove	2,552	2016 AD Survey	0	2194	100%
Residential Dredging	1,267	2016 BD Survey	0	1417	112%
*** Fire Boat Slip	188	Fire Boat AD Survey	0	262	139%
TOTALS	98,867		873	32,785	35%

* Volumes include Required and Allowable Pay Overdepth **100% Complete when approved by Owner

*** Change Order

Sevenson Equipment List

SES Equipment #	Make/Model	Description	Date Onsite	Hrs	Qty
Heavy Equipment					
773-13	Cat 336E Ex	Cat Excavator	11/2/2016		1
1848-13	Komatsu PC 350 Ex	PC 350 Excavator	9/20/2016		1
1146-14	Komatsu PC 400 LF	PC 400 LF Excavator	11/10/2016		1
1243-16	Sennebogen 860	Material Handler	9/13/2016		1
1246-16	Sennebogen 860	Material Handler	9/16/2016		1
1057-31	Cat 950 Loader	Cat 950 Front End Loader	9/14/2016		1
1085-32	Cat 966 Loader	Cat 966 Front End Loader	9/21/2016		1
655-32	Komatsu 450 Loader	Komatsu 450-3MC Loader	11/2/2016		1
840-55	JCB 540 Lodall	Telescoping Forklift	9/13/2016		1
1050-37	JCB 190 Skid Steer	Rubber Tire Skid Steer	9/15/2016		1
Buckets					
1246-1B	Anvil Bucket	4.0 CY Clamshell Bucket	9/13/2016		1
10664-19	Anvil Bucket	3.5 CY Clamshell Bucket	10/31/2016		1
9023-19	Anvil Bucket	3.5 CY Clamshell w/ Teeth	11/18/2016		
9010-19	Cablearm Bucket	5CY Cablearm Clamshell Bucket	10/6/2016		1
Compressor / Generator / Power Pack					
835-06	IR 185 Compressor	Air Compressor 185	9/15/2016		1
1404-13	XQ60 Generator	Generator XQ60	9/15/2016		1
1119-92	Hydraulic Power Pack	Winch Power Pack 80hp	9/15/2016		1
Light Plants					
943-90	Amida Light Plant	Light Plant	9/21/2016		1
945-90	Amida Light Plant	Light Plant	9/20/2016		1
999-90	Terex RL 400 Light	Light Plant	9/21/2016		1
1219-90	Terex RL 400 Light	Light Plant	10/10/2016		1
1206-90	Terex RL 400 Light	Light Plant	10/10/2016		1
670-90	Terex RL 400 Light	Light Plant	10/10/2016		1
	Terex RL 400 Light	Light Plant	10/20/2016		1
	Terex RL 400 Light	Light Plant	10/20/2016		1
	Terex RL 400 Light	Light Plant	10/20/2016		1
Seabox					
BB24420-47	Seabox	Seabox	9/13/2016		1
234056	Seabox	Seabox	9/15/2016		1
Vehicles					
13-66	Ford F250 Pickup	Pickup	10/6/2016		1
301-63	Street Sweeper	International Sweeper Truck	11/1/2016		1
Water Treatment System					
1458-E	Bag Filter Housing	Bag Filter Housing	9/20/2016		1
1716-E	Bag Filter Housing	Bag Filter Housing	9/20/2016		1
1673-E	Bag Filter Housing	Bag Filter Housing	9/20/2016		1
1718-E	Bag Filter Housing	Bag Filter Housing	9/20/2016		1
1674-E	Bag Filter Housing	Bag Filter Housing	9/20/2016		1
1762-E	Bag Filter Housing	Bag Filter Housing	9/20/2016		1
Boats					
1311-82	Hydraulic Push Boat	Hydraulic Push Boat	10/12/2016		1
1082-83	Yamaha Twin Outboard	Push Boat	10/24/2016		1
8721-83	Bumblebee Boat	Push Boat	9/14/2016		1
1706-83	Tugboat	Shirley Tugboat	9/15/2016		1
1720-83	Tugboat	7 Bells Tugboat	10/6/2016		1
1657-82	Dredge Tender	DSC Dredge Tender	9/23/2016		1
1318-83	Triumph 21' Boat	Boat	9/20/2016		1
Rake Ends / Spuds					
RAKE ENDS	BARGE RAKE ENDS	BARGE RAKE ENDS	9/23/2016		4
1284-46	2 Poseidon 50' Spud SP 243	Poseidon Spud	10/6/2016		2

Sevenson Equipment List

Rental Equipment	Make/Model	Description	Date Onsite	Hrs	Qty
Barges					
PF7-127RCT	Poseidon Barge 40'	40'x10'x7' Barge	9/14/2016		1
PF7-179QCT	Poseidon Barge 40'	40'x10'x7' Barge	9/14/2016		1
247B008	Poseidon Barge 40'	40'x10'x7' Barge	9/14/2016		1
PF7-128RCT	Poseidon Barge 40'	40'x10'x7' Barge	9/14/2016		1
990EC	Shakerton Barge 40'	40'x10'x5' Barge	9/14/2016		1
019917	Shakerton Barge 40'	40'x10'x5' Barge	9/14/2016		1
J-111-E	Shakerton Barge 40'	40'x10'x5' Barge	9/14/2016		1
990EJ	Shakerton Barge 40'	40'x10'x5' Barge	9/14/2016		1
019919	Shakerton Barge 40'	40'x10'x5' Barge	9/14/2016		1
990ER	Shakerton Barge 40'	40'x10'x5' Barge	9/14/2016		1
PF2713QC	Poseidon Barge 20'	20'x10'x5' Barge	9/15/2016		1
PF27132QCT	Poseidon Barge 20'	20'x10'x5' Barge	9/15/2016		1
227B006	Poseidon Barge 20'	20'x10'x5' Barge	9/15/2016		1
227B033	Poseidon Barge 20'	20'x10'x5' Barge	9/15/2016		1
247B034	Poseidon Barge 40'	40'x10'x7' Barge	9/15/2016		1
247C134	Poseidon Barge 40'	40'x10'x7' Barge	9/15/2016		1
P114Q	Poseidon Barge 40'	40'x10'x5' Barge	9/15/2016		1
990Ea	Shakerton Barge 40'	40'x10'x5' Barge	9/15/2016		1
9928	Shakerton Barge 40'	40'x10'x5' Barge	9/15/2016		1
996EB	Shakerton Barge 40'	40'x10'x5' Barge	9/15/2016		1
996EG	Shakerton Barge 40'	40'x10'x5' Barge	9/15/2016		1
9649	Shakerton Barge 20'	40'x10'x5' Barge	9/15/2016		1
9947	Shakerton Barge 20'	40'x10'x5' Barge	9/15/2016		1
9648	Shakerton Barge 20'	40'x10'x5' Barge	9/15/2016		1
9650	Shakerton Barge 20'	40'x10'x5' Barge	9/15/2016		1
	Shakerton Barge	40' x 10' x 5' Barge	10/6/2016		9
Scows					
996-85	Scow Open Top	Scow Open Top	10/28/2016		1
1901-85	Scow Open Top	Scow Open Top	10/6/2016		1
1906-85	Scow Open Top	Scow Open Top	10/6/2016		1
1908-85	Scow Open Top	Scow Open Top	10/6/2016		1
1910-85	Scow Open Top	Scow Open Top	10/6/2016		1
1962-85	Scow Open Top	Scow Open Top	10/6/2016		1
1963-85	Scow Open Top	Scow Open Top	10/6/2016		1
1964-85	Scow Open Top	Scow Open Top	10/28/2016		1
1965-85	Scow Open Top	Scow Open Top	10/28/2016		1
1966-85	Scow Open Top	Scow Open Top	10/28/2016		1
Rental Equipment					
Frac Tank	Adler	Adler Open Top Weir Tank	9/16/2016		2
Frac Tank	Adler	21K Gal Frac Tank	9/16/2016		1
Roll Off	Adler	Adler Roll Off Geotube Box	9/20/2016		3
1288-1B	Anvil	3.5CY Clamshell Bucket	9/14/2016		1
	Anvil	3.5CY Clamshell Bucket - DEMO	10/14/2016		1
Roll Off Container	H4	Roll Off Container	9/20/2016		1
Roll Off Container	H4	Roll Off Container	9/20/2016		1
Break Trailer	Modspace	Break Trailer	9/12/2016		1
Office Trailer	Modspace	Office Trailer	9/23/2016		1
Barge Floats	Northstar Marine	Flexi Floats	11/14/2016		6
Light Plants	Sunbelt Rentals	Light Plants	11/1/2016		4
Noise Meter	Pine Environmental	Pine Environmental Noise Meter	9/26/2016		1
500 gal fuel tank	Taylor Oil	Gas Tank	9/20/2016		1
500 gal fuel tank	Taylor Oil	Off Road Diesel Tank	9/20/2016		1

Labor

SES Personnel		
Shift: Day		Hrs
0	General Superintendent	0.0
0	Project Manager	0.0
1	Project Superintendent	12.0
0	Timekeeper	0.0
0	QA/QC Manager	0.0
1	Surveyor	12.0
1	Mechanic	12.0
0	Health and Safety	0.0
2	SES Foreman	24.0
1	Labor Foreman 172/472	12.0
5	Laborer 172/472	57.5
4	Operator 825	46.0
2	Licensed Boat Op 25	24.0
1	Mate 25	12.0
3	Deckhand 25	36.0
1	Dredge Op 25	12.0
22	Totals	259.5

SES Subcontractor Personnel		
Shift: Day		Hrs
0	Hydrographic Surveys	0
0	Totals	0.0

Day Shift
Employees **22**

Night Shift
Employees **0**

Daily Total
Employees 22

Day Shift Hours **259.5**

Night Shift
Hours **0.0**

Today's Man
Hours 259.5

Total Man Hours
to Date **14,327.5**

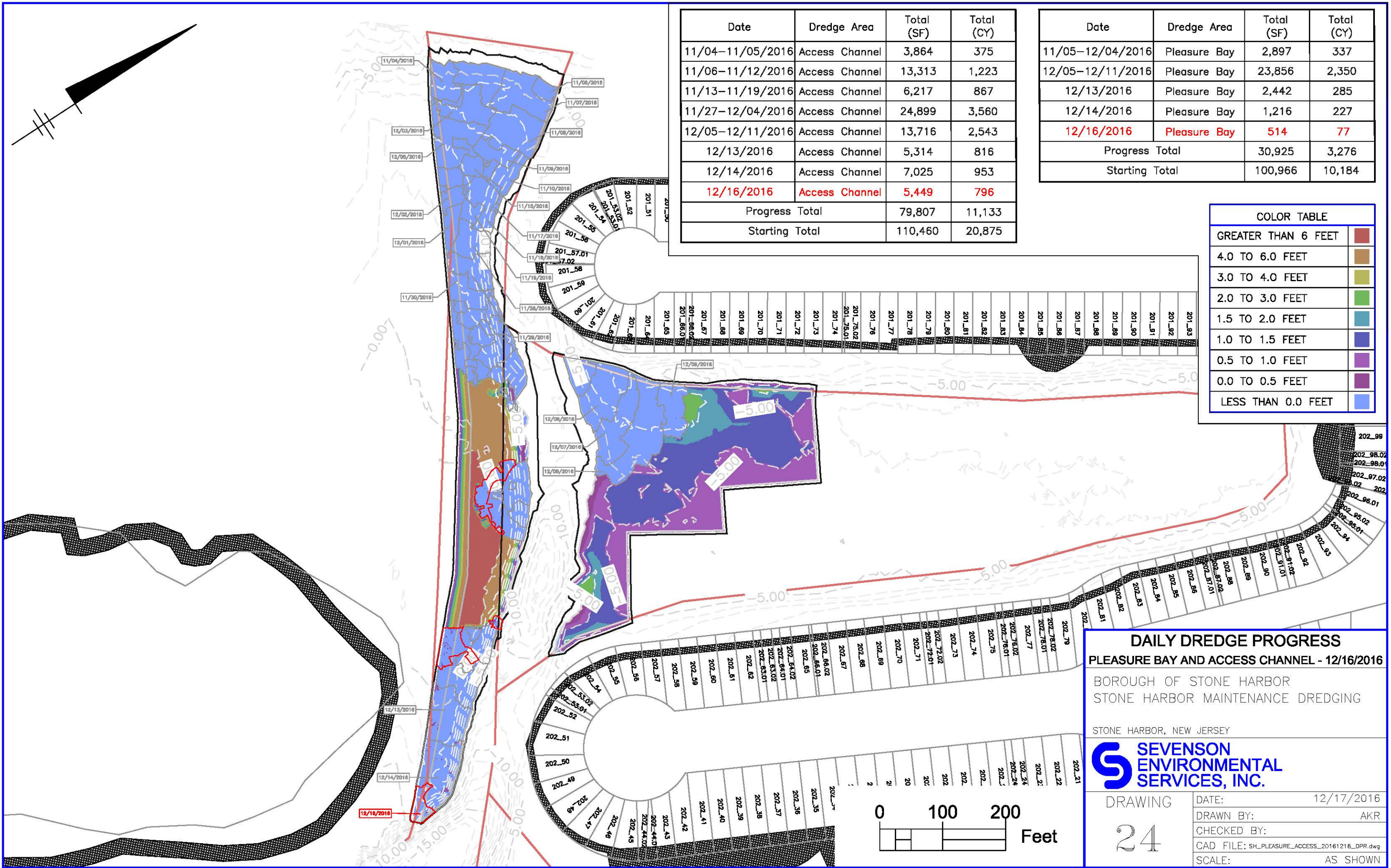
SES Personnel		
Shift: Night		Hrs
0	Totals	0.0

SES Subcontractor Personnel		
Shift: Day		Hrs
0	Totals	0.0

Total Man Hours
Since Last Time
Incident **14,327.5**

Lost Time Incidents To-Date - 0

Last Lost Time Incident -
N/a



Date	Dredge Area	Total (SF)	Total (CY)
11/04-11/05/2016	Access Channel	3,864	375
11/06-11/12/2016	Access Channel	13,313	1,223
11/13-11/19/2016	Access Channel	6,217	867
11/27-12/04/2016	Access Channel	24,899	3,560
12/05-12/11/2016	Access Channel	13,716	2,543
12/13/2016	Access Channel	5,314	816
12/14/2016	Access Channel	7,025	953
12/16/2016	Access Channel	5,449	796
Progress Total		79,807	11,133
Starting Total		110,460	20,875

Date	Dredge Area	Total (SF)	Total (CY)
11/05-12/04/2016	Pleasure Bay	2,897	337
12/05-12/11/2016	Pleasure Bay	23,856	2,350
12/13/2016	Pleasure Bay	2,442	285
12/14/2016	Pleasure Bay	1,216	227
12/16/2016	Pleasure Bay	514	77
Progress Total		30,925	3,276
Starting Total		100,966	10,184

COLOR TABLE	
GREATER THAN 6 FEET	
4.0 TO 6.0 FEET	
3.0 TO 4.0 FEET	
2.0 TO 3.0 FEET	
1.5 TO 2.0 FEET	
1.0 TO 1.5 FEET	
0.5 TO 1.0 FEET	
0.0 TO 0.5 FEET	
LESS THAN 0.0 FEET	

DAILY DREDGE PROGRESS
PLEASURE BAY AND ACCESS CHANNEL - 12/16/2016

BOROUGH OF STONE HARBOR
STONE HARBOR MAINTENANCE DREDGING

STONE HARBOR, NEW JERSEY



DRAWING	DATE:	12/17/2016
24	DRAWN BY:	AKR
	CHECKED BY:	
	CAD FILE:	SH_PLEASURE_ACCESS_20161216_DPR.dwg
	SCALE:	AS SHOWN