



Weather
High 74
Low 53
 Precipitation
0.0"

Reports No.
6

Project No.
1145

Report Date:
09/17/16

Day of Week:
Saturday



Daily Progress Report

Copyright 2005, Severson Environmental Services, Inc.
 All Rights Reserved. ©

Weather Conditions:

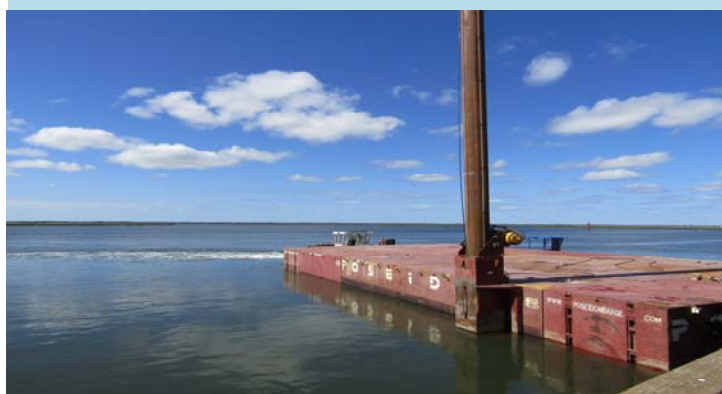
Clear



1 Prepping spuds for installation on the mechanical dredging barge



2 Prepping the mechanical dredging barge for spud installation



3 Hydraulic spud installed on the mechanical dredging barge



4 Both spuds installed on the mechanical dredging barge



5 Frac tanks set up for the 300GPM water treatment plant



6 Assembling material storage area walls with bin blocks

Work Performed by Severson

- Offloaded SES Equipment
- Continued building bins for material storage using bin blocks
- Installed hydraulic spuds on the mechanical dredging barge
- Began layout of the 300GPM water treatment plant
- Continued assembly of the Mechanical Dredging Barge

Weekly Summary

Date		Dredge QTY (CY)	Disposal QTY (Tns)
01/18/16	Mon	--	--
01/19/16	Tue	--	--
01/20/16	Wed	--	--
01/21/16	Thu	--	--
01/22/16	Fri	--	--
01/23/16	Sat	--	--
01/24/16	Sun	--	--
Weekly Totals		0 CY	0 Tns

Safety Remarks

- No accidents or incidents observed or reported.
- Conducted daily safety meeting: Equipment inspections.

Remarks/Verbal Directives

Planned Activities

- Continue to offload equipment
- Install temporary privacy fence around jobsite
- Pave drainage channel
- Install watertight foam around Jersey Barrier Perimeter
- Set up and Install GPS system

Other Information

Work Performed by Subcontractors

- None

Equipment/Materials Delivered to Site

- FOR A LIST OF EQUIPMENT RECEIVED TODAY PLEASE SEE PAGE 3

Production Tables

Disposal	Kinsley	Cape Mining	Beach	Other	Other	Total	Unit
Today	0.00					0.00	Tons
Previous	0					0.00	Tons
Total	0.00					0.00	Tons

Dredging	Available Pay (CY)	Quantity Data Source	Dredged Today (CY)	Dredged To Date (CY)	% Complete
South Basin	5,000	Contract Bid Sheet	0	0	0%
Snug Harbor	8,000	Contract Bid Sheet	0	0	0%
Shelter Haven Entrance	1,800	Contract Bid Sheet	0	0	0%
Stone Harbor	4,000	Contract Bid Sheet	0	0	0%
Pleasure Bay	11,000	Contract Bid Sheet	0	0	0%
Carnival Bay	20,000	Contract Bid Sheet	0	0	0%
Sanctuary Bay	13,000	Contract Bid Sheet	0	0	0%
Paradise Bay	9,000	Contract Bid Sheet	0	0	0%
Access Channel	7,000	Contract Bid Sheet	0	0	0%
Stone Harbor Hole	4,000	Contract Bid Sheet	0	0	0%
TOTALS	82,800		0	0	0%

* Volumes include Required and Allowable Pay Overdepth **100% Complete when approved by Owner

[illegible]

[illegible]

Labor

SES Personnel		
Shift: Day		Hrs
1	General Superintendent	9.0
0	Project Manager	0.0
0	Project Superintendent	0.0
0	QA/QC Manager	0.0
0	Surveyor	0.0
1	Mechanic	9.0
0	Health and Safety	0.0
1	Labor Foreman 172/472	9.0
2	Laborer 172/472	17.5
2	Operator 825	17.0
1	Licensed Boat Op 25	8.5
0	Mate 25	0.0
1	Deckhand 25	8.5
9	Totals	78.5

[illegible]

Day Shift Employees	9
---------------------	---

Night Shift Employees	0
-----------------------	---

Daily Total Employees	9
-----------------------	---

Day Shift Hours	78.5
-----------------	------

Night Shift Hours	0.0
-------------------	-----

Today's Man Hours	78.5
----------------------	------

Total Man Hours to Date	481.5
--------------------------------	--------------

[illegible]

SES Subcontractor Personnel		
Shift:	Day	Hrs
0	Totals	0.0

Total Man Hours Since Last Time Incident	481.5
--	-------

Lost Time Incidents To-Date - 0

Last Lost Time Incident -
N/a