



Weather
High 80
Low 55
 Precipitation
0.00

Reports No.
40

Project No.
1145

Report Date:
11/03/16

Day of Week:
Thursday



Daily Progress Report

Copyright 2005, Severson Environmental Services, Inc.
 All Rights Reserved. ©

Weather Conditions:

Clear



1 Dredging inside moon pool



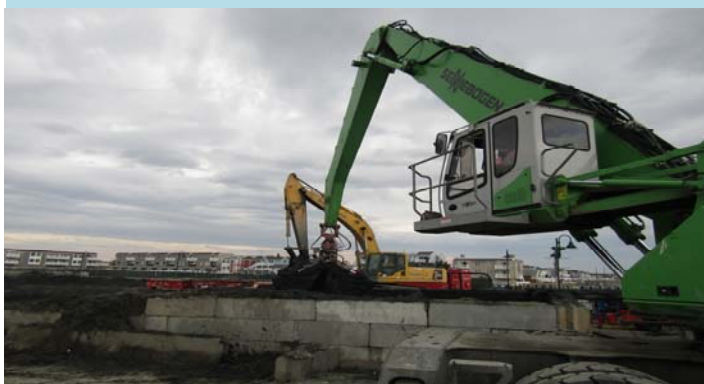
2 Dredge Barge from inside Stone Harbor Basin



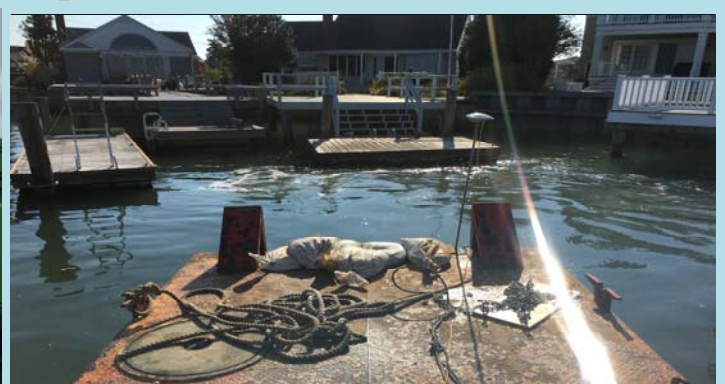
3 Full Scow being pulled out of Stone Harbor for unloading



4 Unloading dredge material at the bulkhead



5 Sennebogen mixing dredge material with Portland Cement



6 Surveying residential boat slips in Stone Harbor

Work Performed by Severson

- Continued communication with residents regarding residential slip dredging
- Continued survey of resident boat slips
- Continued blending dredge material with Portland Cement
- Continued staging blended dredge material in anticipation of disposal
- Continued noise level monitoring activities
- Continued dust monitoring activities
- Continued loadout of material from Stone Harbor Basin

- Removed 1,001 CY from Stone Harbor Basin.
- Disposed 1,604 tons to Cape Mining Landfill from Stone Harbor Basin

Weekly Summary

Date		Dredge QTY (CY)	Disposal QTY (Tns)
10/31/16	Mon	510	974
11/01/16	Tue	1,205	0
11/02/16	Wed	1,017	1,426
11/03/16	Thu	1,001	1,604
11/04/16	Fri		
11/05/16	Sat		
11/06/16	Sun	--	--
Weekly Totals		3,733 CY	4,004 Tns

Safety Remarks

- No accidents or incidents observed or reported.
- Conducted daily safety meeting: Truck Traffic

Remarks/Verbal Directives

- None

Work Performed by Subcontractors

Planned Activities

- Continue survey of residential slips for residential slip dredging
- Continue load out of dredge material
- Prepare for residential dredging in Stone Harbor Basin
- COWI has scheduled Hydrographic Survey for Friday, 11/04 to perform before dredge survey of Tuxedo Cove
- Finish Stone Harbor Basin and move South to Access Channel and Pleasure Bay

Equipment/Materials Delivered to Site

- FOR A LIST OF EQUIPMENT RECEIVED TODAY PLEASE SEE PAGE 3

Other Information

- **The Stone Harbor Blvd Bridge is closed to both vehicle and boat traffic indefinitely. This impacts both dredging and disposal operations and schedule.**

Production Tables

Disposal	Kinsley	Cape Mining	Beach	Other	Other	Total	Unit
Today	0	1,604				1,604	Tons
Previous	4,667	12,249				16,916	Tons
Total	4,667	13,853				18,520	Tons

Dredging	Available Pay (CY)	Quantity Data Source	Dredged Today (CY)	Dredged To Date (CY)	% Complete
South Basin	4,862	2016 AD Survey	0	3,385	100%
Snug Harbor	9,445	2016 AD Survey	0	6,153	100%
Shelter Haven Entrance	1,834	2016 AD Survey	0	1,303	100%
Stone Harbor	4,878	2016 BD Survey	1001	3733	77%
Pleasure Bay	10,184	Contract Bid Sheet	0	0	0%
Carnival Bay	15,874	Contract Bid Sheet	0	0	0%
Sanctuary Bay	16,391	Contract Bid Sheet	0	0	0%
Paradise Bay	10,517	Contract Bid Sheet	0	0	0%
Access Channel	20,875	Contract Bid Sheet	0	0	0%
Stone Harbor Hole	0	Contract Bid Sheet	0	0	0%
Residential Dredging	522	2016 BD Survey	0	522	100%
*** Fire Boat Slip	188	Fire Boat AD Survey	0	188	100%
TOTALS	95,570		1,001	15,284	21%

* Volumes include Required and Allowable Pay Overdepth **100% Complete when approved by Owner

*** Change Order

Sevenson Equipment List

SES Equipment #	Make/Model	Description	Date Onsite	Hrs	Qty
526-E	JCB Lodall	Telescoping Forklift	9/12/2016		1
Break Trailer	Modspace	Break Trailer	9/12/2016		1
840-E	JCB Lodall	Telescoping Forklift	9/13/2016		1
BB24420	Seabox	Seabox	9/13/2016		1
1243-E	Sennebogen 860	Material Handler	9/13/2016		1
1246-1B	Anvil 4Cy Clamshell	Clamshell Bucket	9/13/2016		1
1057-E	Cat 950 Loader	Loader	9/14/2016		1
PF7-127RCT	Poseidon Barge 40'	40'x10'x7' Barge	9/14/2016		1
PF7-179QCT	Poseidon Barge 40'	40'x10'x7' Barge	9/14/2016		1
247B008	Poseidon Barge 40'	40'x10'x7' Barge	9/14/2016		1
PF7-128RCT	Poseidon Barge 40'	40'x10'x7' Barge	9/14/2016		1
990EC	Shakerton Barge 40'	40'x10'x5' Barge	9/14/2016		1
019917	Shakerton Barge 40'	40'x10'x5' Barge	9/14/2016		1
J-111-E	Shakerton Barge 40'	40'x10'x5' Barge	9/14/2016		1
990EJ	Shakerton Barge 40'	40'x10'x5' Barge	9/14/2016		1
019919	Shakerton Barge 40'	40'x10'x5' Barge	9/14/2016		1
990ER	Shakerton Barge 40'	40'x10'x5' Barge	9/14/2016		1
8721-E	Bumblebee Boat	Push Boat	9/14/2016		1
PF2713QC	Poseidon Barge 20'	20'x10'x5' Barge	9/15/2016		1
PF27132QCT	Poseidon Barge 20'	20'x10'x5' Barge	9/15/2016		1
227B006	Poseidon Barge 20'	20'x10'x5' Barge	9/15/2016		1
227B033	Poseidon Barge 20'	20'x10'x5' Barge	9/15/2016		1
247B034	Poseidon Barge 40'	40'x10'x7' Barge	9/15/2016		1
247C134	Poseidon Barge 40'	40'x10'x7' Barge	9/15/2016		1
P114Q	Poseidon Barge 40'	40'x10'x5' Barge	9/15/2016		1
990Ea	Shakerton Barge 40'	40'x10'x5' Barge	9/15/2016		1
9928	Shakerton Barge 40'	40'x10'x5' Barge	9/15/2016		1
996EB	Shakerton Barge 40'	40'x10'x5' Barge	9/15/2016		1
996EG	Shakerton Barge 40'	40'x10'x5' Barge	9/15/2016		1
9649	Shakerton Barge 20'	40'x10'x5' Barge	9/15/2016		1
9947	Shakerton Barge 20'	40'x10'x5' Barge	9/15/2016		1
9648	Shakerton Barge 20'	40'x10'x5' Barge	9/15/2016		1
9650	Shakerton Barge 20'	40'x10'x5' Barge	9/15/2016		1
234056	Seabox	Seabox	9/15/2016		1
1706-E	Tugboat	Shirley Tugboat	9/15/2016		1
1050-E	JCB 190 Skid Steer	Rubber Tire Skid Steer	9/15/2016		1
835-E	IR 185 Compressor	Air Compressor 185	9/15/2016		1
1404-E	XQ60 Generator	Generator XQ60	9/15/2016		1
1246-16	Sennebogen 860	Material Handler	9/16/2016		1
Frac Tank	Adler	Adler Open Top Weir Tank	9/16/2016		2
Frac Tank	Adler	21K Gal Frac Tank	9/16/2016		1
1458-E	Bag Filter Housing	Bag Filter Housing	9/20/2016		1
1716-E	Bag Filter Housing	Bag Filter Housing	9/20/2016		1
1673-E	Bag Filter Housing	Bag Filter Housing	9/20/2016		1
1718-E	Bag Filter Housing	Bag Filter Housing	9/20/2016		1
1674-E	Bag Filter Housing	Bag Filter Housing	9/20/2016		1
1762-E	Bag Filter Housing	Bag Filter Housing	9/20/2016		1
1318-E	Triumph 21' Boat	Boat	9/20/2016		1
670-E	Terex RL 400 Light	Light Plant	9/20/2016		1
1848-E	Komatsu PC 350 Ex	PC 350 Excavator	9/20/2016		1
Roll Off	Adler	Adler Roll Off Geotube Box	9/20/2016		3
500 gal fuel tank	Taylor Oil	Gas Tank	9/20/2016		1
500 gal fuel tank	Taylor Oil	Off Road Diesel Tank	9/20/2016		1
Roll Off Container	H4	Roll Off Container	9/20/2016		1
Roll Off Container	H4	Roll Off Container	9/20/2016		1
1206-E	Genie Light Tower	Genie Light Tower / Generator	9/21/2016		1
999-E	Terex RL 400 Light	Light Plant	9/21/2016		1

[illegible]

Labor

SES Personnel		
Shift: Day		Hrs
0	General Superintendent	0.0
1	Project Manager	12.0
3	Project Superintendent	36.0
1	Timekeeper	8.0
0	QA/QC Manager	0.0
1	Surveyor	12.0
0	Mechanic	0.0
0	Health and Safety	0.0
1	SES Foreman	12.0
1	Labor Foreman 172/472	11.5
5	Laborer 172/472	57.5
4	Operator 825	46.0
2	Licensed Boat Op 25	24.0
1	Mate 25	12.0
2	Deckhand 25	24.0
0	Dredge Op 25	0.0
22	Totals	255.0

SES Subcontractor Personnel		
Shift: Day		Hrs
0	Hydrographic Surveys	0
0	Totals	0.0

Day Shift
Employees **22**

Night Shift
Employees **0**

Daily Total
Employees 22

Day Shift Hours **255.0**

Night Shift
Hours **0.0**

Today's Man
Hours 255.0

Total Man Hours
to Date **6,967.0**

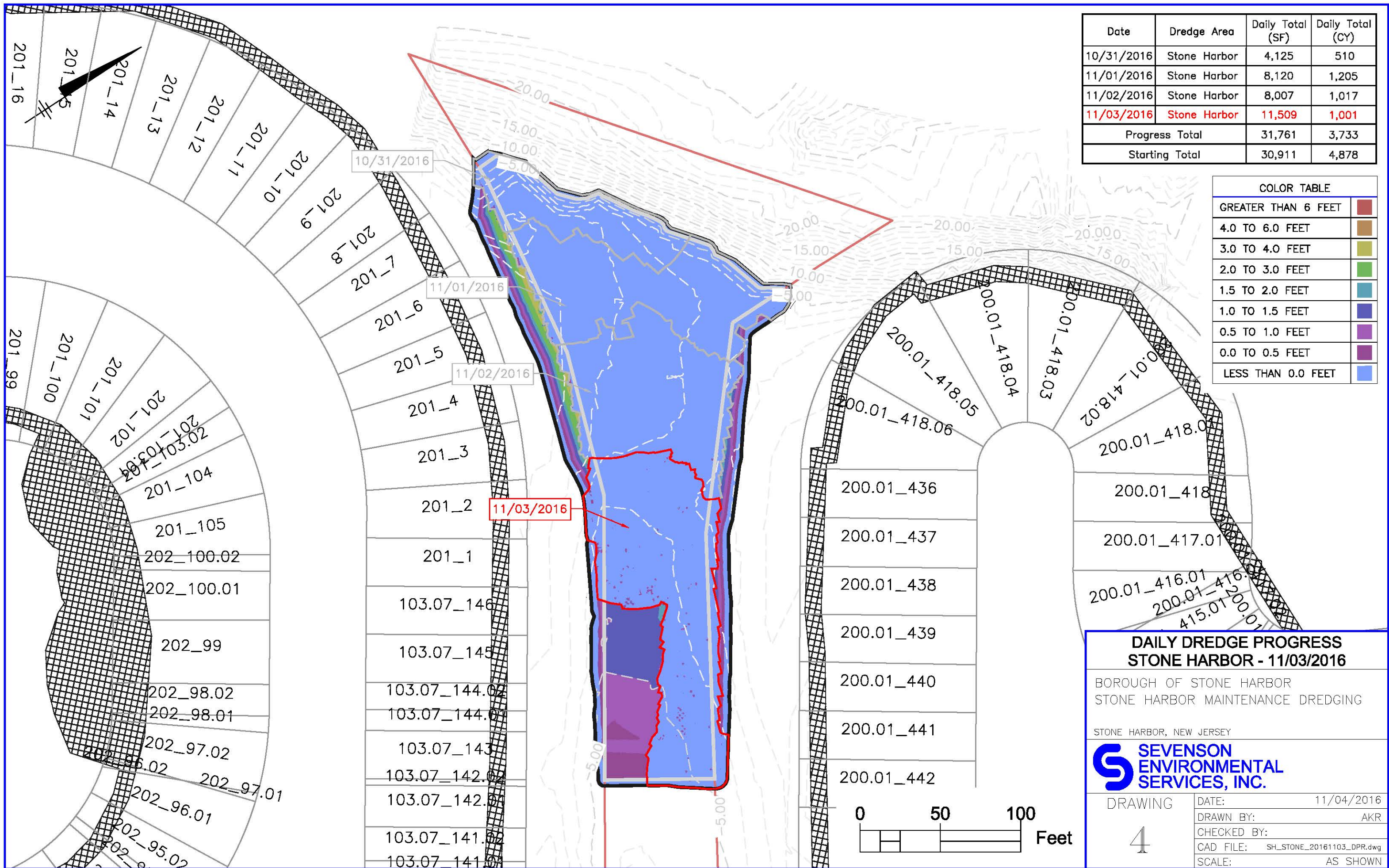
SES Personnel		
Shift: Night		Hrs
0	Totals	0.0

SES Subcontractor Personnel		
Shift: Day		Hrs
0	Totals	0.0

Total Man Hours
Since Last Time
Incident **6,967.0**

Lost Time Incidents To-Date - **0**

Last Lost Time Incident -
N/a



Date	Dredge Area	Daily Total (SF)	Daily Total (CY)
10/31/2016	Stone Harbor	4,125	510
11/01/2016	Stone Harbor	8,120	1,205
11/02/2016	Stone Harbor	8,007	1,017
11/03/2016	Stone Harbor	11,509	1,001
Progress Total		31,761	3,733
Starting Total		30,911	4,878

COLOR TABLE	
GREATER THAN 6 FEET	
4.0 TO 6.0 FEET	
3.0 TO 4.0 FEET	
2.0 TO 3.0 FEET	
1.5 TO 2.0 FEET	
1.0 TO 1.5 FEET	
0.5 TO 1.0 FEET	
0.0 TO 0.5 FEET	
LESS THAN 0.0 FEET	

DAILY DREDGE PROGRESS
STONE HARBOR - 11/03/2016

BOROUGH OF STONE HARBOR
STONE HARBOR MAINTENANCE DREDGING

STONE HARBOR, NEW JERSEY

SEVENSON
ENVIRONMENTAL
SERVICES, INC.

DRAWING
4

DATE: 11/04/2016
DRAWN BY: AKR
CHECKED BY:
CAD FILE: SH_STONE_20161103_DPR.dwg
SCALE: AS SHOWN