



Weather
High 63
Low 44
 Precipitation
0.00

Reports No.
42

Project No.
1145

Report Date:
11/05/16

Day of Week:
Saturday



Daily Progress Report

Copyright 2005, Severson Environmental Services, Inc.
 All Rights Reserved. ©

Weather Conditions:

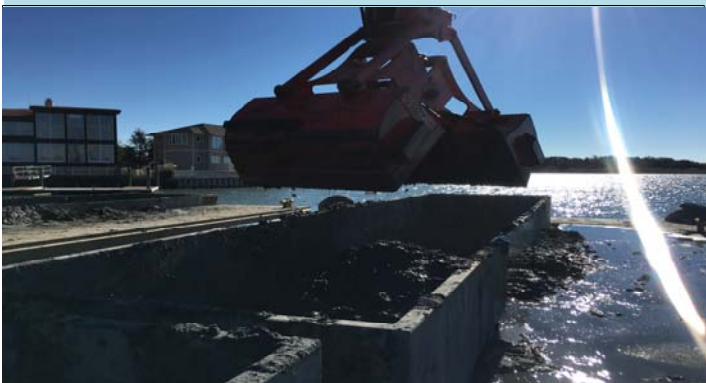
Clear + Windy



1 Dredging in the Access Channel with a smaller 3.5 CY clamshell bucket



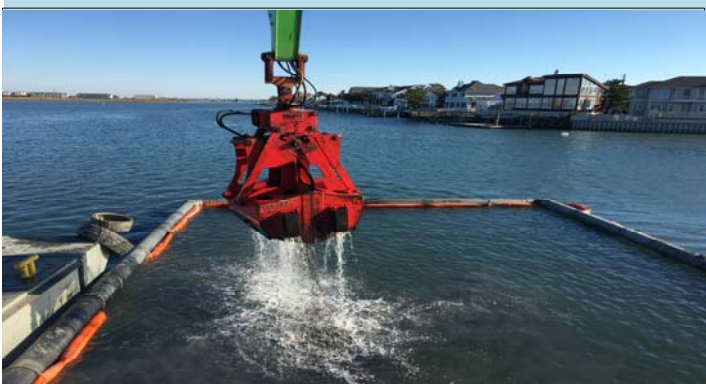
2 Unloading dredge material at the bulkhead



3 Filling a scow with dredge material



4 966 Loader filling a truck with dredge material to be hauled to Cape Mining Landfill



5 3.5 CY clamshell bucket dredging compacted sand material in the Access Channel



6 Loading out material from the North pad

Work Performed by Severson

- Continued communication with residents regarding residential slip dredging
- Continued survey of resident boat slips
- Continued blending dredge material with Portland Cement
- Continued staging blended dredge material in anticipation of disposal
- Continued noise level monitoring activities
- Continued dust monitoring activities
- Continued loadout of material from Stone Harbor Basin
- Began dredging in the Access Channel

- Removed 134 CY from Access Channel
- Removed 198 CY from Pleasure Bay
- Disposed 1,415 tons to Cape Mining Landfill from Stone Harbor Basin

* Friday Disposal numbers updated *

Work Performed by Subcontractors

Hydrographic Surveys was on site to perform before dredge survey of Tuxedo Cove and after dredge survey of Stone Harbor Basin

Equipment/Materials Delivered to Site

- FOR A LIST OF EQUIPMENT RECEIVED TODAY PLEASE SEE PAGE 3

Weekly Summary

Date		Dredge QTY (CY)	Disposal QTY (Tns)
10/31/16	Mon	510	974
11/01/16	Tue	1,205	0
11/02/16	Wed	1,017	1,426
11/03/16	Thu	1,001	1,604
11/04/16	Fri	446	1,462
11/05/16	Sat	332	1,415
11/06/16	Sun	--	--
Weekly Totals		4,511 CY	6,881 Tns

Safety Remarks

- No accidents or incidents observed or reported.
- Conducted daily safety meeting: Proper Rigging Techniques

Remarks/Verbal Directives

- None

Planned Activities

- Continue survey of residential slips for residential slip dredging
- Continue load out of dredge material
- Continue Dredging in the Access Channel

Other Information

- **The Stone Harbor Blvd Bridge is closed to both vehicle and boat traffic indefinitely. This impacts both dredging and disposal operations and schedule.**

Production Tables

Disposal	Kinsley	Cape Mining	Beach	Other	Other	Total	Unit
Today	0	1,415				1,415	Tons
Previous	4,667	15,315				19,982	Tons
Total	4,667	16,731				21,398	Tons

Dredging	Available Pay (CY)	Quantity Data Source	Dredged Today (CY)	Dredged To Date (CY)	% Complete
South Basin	4,862	2016 AD Survey	0	3,385	100%
Snug Harbor	9,445	2016 AD Survey	0	6,153	100%
Shelter Haven Entrance	1,834	2016 AD Survey	0	1,303	100%
Stone Harbor	4,878	2016 BD Survey	0	3938	81%
Pleasure Bay	10,184	Contract Bid Sheet	198	198	2%
Carnival Bay	15,874	Contract Bid Sheet	0	0	0%
Sanctuary Bay	16,391	Contract Bid Sheet	0	0	0%
Paradise Bay	10,517	Contract Bid Sheet	0	0	0%
Access Channel	20,875	Contract Bid Sheet	134	375	2%
Stone Harbor Hole	0	Contract Bid Sheet	0	0	0%
Residential Dredging	522	2016 BD Survey	0	522	100%
*** Fire Boat Slip	188	Fire Boat AD Survey	0	188	100%
TOTALS	95,570		332	16,062	22%

* Volumes include Required and Allowable Pay Overdepth **100% Complete when approved by Owner

*** Change Order

Sevenson Equipment List

SES Equipment #	Make/Model	Description	Date Onsite	Hrs	Qty
526-E	JCB Lodall	Telescoping Forklift	9/12/2016		1
Break Trailer	Modspace	Break Trailer	9/12/2016		1
840-E	JCB Lodall	Telescoping Forklift	9/13/2016		1
BB24420	Seabox	Seabox	9/13/2016		1
1243-E	Sennebogen 860	Material Handler	9/13/2016		1
1246-1B	Anvil 4Cy Clamshell	Clamshell Bucket	9/13/2016		1
1057-E	Cat 950 Loader	Loader	9/14/2016		1
PF7-127RCT	Poseidon Barge 40'	40'x10'x7' Barge	9/14/2016		1
PF7-179QCT	Poseidon Barge 40'	40'x10'x7' Barge	9/14/2016		1
247B008	Poseidon Barge 40'	40'x10'x7' Barge	9/14/2016		1
PF7-128RCT	Poseidon Barge 40'	40'x10'x7' Barge	9/14/2016		1
990EC	Shakerton Barge 40'	40'x10'x5' Barge	9/14/2016		1
019917	Shakerton Barge 40'	40'x10'x5' Barge	9/14/2016		1
J-111-E	Shakerton Barge 40'	40'x10'x5' Barge	9/14/2016		1
990EJ	Shakerton Barge 40'	40'x10'x5' Barge	9/14/2016		1
019919	Shakerton Barge 40'	40'x10'x5' Barge	9/14/2016		1
990ER	Shakerton Barge 40'	40'x10'x5' Barge	9/14/2016		1
8721-E	Bumblebee Boat	Push Boat	9/14/2016		1
PF2713QC	Poseidon Barge 20'	20'x10'x5' Barge	9/15/2016		1
PF27132QCT	Poseidon Barge 20'	20'x10'x5' Barge	9/15/2016		1
227B006	Poseidon Barge 20'	20'x10'x5' Barge	9/15/2016		1
227B033	Poseidon Barge 20'	20'x10'x5' Barge	9/15/2016		1
247B034	Poseidon Barge 40'	40'x10'x7' Barge	9/15/2016		1
247C134	Poseidon Barge 40'	40'x10'x7' Barge	9/15/2016		1
P114Q	Poseidon Barge 40'	40'x10'x5' Barge	9/15/2016		1
990Ea	Shakerton Barge 40'	40'x10'x5' Barge	9/15/2016		1
9928	Shakerton Barge 40'	40'x10'x5' Barge	9/15/2016		1
996EB	Shakerton Barge 40'	40'x10'x5' Barge	9/15/2016		1
996EG	Shakerton Barge 40'	40'x10'x5' Barge	9/15/2016		1
9649	Shakerton Barge 20'	40'x10'x5' Barge	9/15/2016		1
9947	Shakerton Barge 20'	40'x10'x5' Barge	9/15/2016		1
9648	Shakerton Barge 20'	40'x10'x5' Barge	9/15/2016		1
9650	Shakerton Barge 20'	40'x10'x5' Barge	9/15/2016		1
234056	Seabox	Seabox	9/15/2016		1
1706-E	Tugboat	Shirley Tugboat	9/15/2016		1
1050-E	JCB 190 Skid Steer	Rubber Tire Skid Steer	9/15/2016		1
835-E	IR 185 Compressor	Air Compressor 185	9/15/2016		1
1404-E	XQ60 Generator	Generator XQ60	9/15/2016		1
1246-16	Sennebogen 860	Material Handler	9/16/2016		1
Frac Tank	Adler	Adler Open Top Weir Tank	9/16/2016		2
Frac Tank	Adler	21K Gal Frac Tank	9/16/2016		1
1458-E	Bag Filter Housing	Bag Filter Housing	9/20/2016		1
1716-E	Bag Filter Housing	Bag Filter Housing	9/20/2016		1
1673-E	Bag Filter Housing	Bag Filter Housing	9/20/2016		1
1718-E	Bag Filter Housing	Bag Filter Housing	9/20/2016		1
1674-E	Bag Filter Housing	Bag Filter Housing	9/20/2016		1
1762-E	Bag Filter Housing	Bag Filter Housing	9/20/2016		1
1318-E	Triumph 21' Boat	Boat	9/20/2016		1
670-E	Terex RL 400 Light	Light Plant	9/20/2016		1
1848-E	Komatsu PC 350 Ex	PC 350 Excavator	9/20/2016		1
Roll Off	Adler	Adler Roll Off Geotube Box	9/20/2016		3
500 gal fuel tank	Taylor Oil	Gas Tank	9/20/2016		1
500 gal fuel tank	Taylor Oil	Off Road Diesel Tank	9/20/2016		1
Roll Off Container	H4	Roll Off Container	9/20/2016		1
Roll Off Container	H4	Roll Off Container	9/20/2016		1
1206-E	Genie Light Tower	Genie Light Tower / Generator	9/21/2016		1
999-E	Terex RL 400 Light	Light Plant	9/21/2016		1

[illegible]

Labor

SES Personnel		
Shift: Day		Hrs
0	General Superintendent	0.0
0	Project Manager	0.0
1	Project Superintendent	10.5
0	Timekeeper	0.0
0	QA/QC Manager	0.0
1	Surveyor	10.0
0	Mechanic	0.0
0	Health and Safety	0.0
2	SES Foreman	21.0
1	Labor Foreman 172/472	8.0
5	Laborer 172/472	40.0
4	Operator 825	32.0
2	Licensed Boat Op 25	21.0
1	Mate 25	10.5
2	Deckhand 25	21.0
0	Dredge Op 25	0.0
19	Totals	174.0

SES Subcontractor Personnel		
Shift: Day		Hrs
2	Hydrographic Surveys	16
2	Totals	16.0

Day Shift
Employees **21**

Night Shift
Employees **0**

Daily Total
Employees 21

Day Shift Hours **190.0**

Night Shift
Hours **0.0**

Today's Man
Hours 190.0

Total Man Hours
to Date **7,394.0**

SES Personnel		
Shift: Night		Hrs
0	Totals	0.0

SES Subcontractor Personnel		
Shift: Day		Hrs
0	Totals	0.0

Total Man Hours
Since Last Time
Incident **7,394.0**

Lost Time Incidents To-Date - **0**

Last Lost Time Incident -
N/a

