



Weather
High 64
Low 44
 Precipitation
0.00

Reports No.
24

Project No.
1145

Report Date:
10/15/16

Day of Week:
Saturday



Daily Progress Report

Copyright 2005, Severson Environmental Services, Inc.
 All Rights Reserved. ©

Weather Conditions:

Clear



1 Material being moved out of drying bins for further stabilization



2 Hydrographic Surveys re-running survey lines in the fire boat slip



3 Dredge material standing up nicely after being mixed with portland



4 Close up look at mini geo - bags filtering water



5 Moving material on pad for further stabilization



6 966 loader cleaning up North pad in preparation for Monday loadout

Work Performed by Severson

- Continued communication with residents regarding residential slip dredging
- Continued survey of resident boat slips
- Continued blending dredge material with Portland Cement
- Continued staging blended dredge material in anticipation of disposal
- Continued checking dredge depth using a lead line
- Continued noise level monitoring activities
- **Volumes for fire boat slip on right and in chart below are updated based off of Hydrographic Surveys secondary survey completed Saturday 10-15-16.**

Work Performed by Subcontractors

- Hydrographic Surveys was on site to perform bathymetric survey of the fire boat slip, and residential slips in Snug Harbor.

Equipment/Materials Delivered to Site

- FOR A LIST OF EQUIPMENT RECEIVED TODAY PLEASE SEE PAGE 3

Weekly Summary

| Date | | Dredge QTY (CY) | Disposal QTY (Tns) |
|----------------------|-----|-----------------|--------------------|
| 10/10/16 | Mon | 610 | -- |
| 10/11/16 | Tue | 871 | -- |
| 10/12/16 | Wed | 494 | -- |
| 10/13/16 | Thu | 559 | -- |
| 10/14/16 | Fri | 188 | -- |
| 10/15/16 | Sat | -- | -- |
| 10/16/16 | Sun | -- | -- |
| Weekly Totals | | 2,722 CY | 0 Tns |

Safety Remarks

- No accidents or incidents observed or reported.
- Conducted daily safety meeting: Proper rigging techniques

Remarks/Verbal Directives

- None

Planned Activities

- Continue survey of residential slips for residential slip dredging
- Load out dredge material Monday afternoon
- Initiate set up for Snug Harbor dredging

Other Information

- None

Production Tables

| Disposal | Kinsley | Cape Mining | Beach | Other | Other | Total | Unit |
|----------|---------|-------------|-------|-------|-------|-------|------|
| Today | 0.00 | | | | | 0.00 | Tons |
| Previous | 0 | | | | | 0.00 | Tons |
| Total | 0.00 | | | | | 0.00 | Tons |

| Dredging | Available Pay (CY) | Quantity Data Source | Dredged Today (CY) | Dredged To Date (CY) | % Complete |
|------------------------|--------------------|----------------------|--------------------|----------------------|------------|
| South Basin | 3,992 | 2016 BD Survey | 0 | 3051 | 76% |
| Snug Harbor | 8,468 | 2016 BD Survey | 0 | 0 | 0% |
| Shelter Haven Entrance | 1,600 | 2016 BD Survey | 0 | 0 | 0% |
| Stone Harbor | 4,165 | 2016 BD Survey | 0 | 0 | 0% |
| Pleasure Bay | 11,000 | Contract Bid Sheet | 0 | 0 | 0% |
| Carnival Bay | 20,000 | Contract Bid Sheet | 0 | 0 | 0% |
| Sanctuary Bay | 13,000 | Contract Bid Sheet | 0 | 0 | 0% |
| Paradise Bay | 9,000 | Contract Bid Sheet | 0 | 0 | 0% |
| Access Channel | 7,000 | Contract Bid Sheet | 0 | 0 | 0% |
| Stone Harbor Hole | 4,000 | Contract Bid Sheet | 0 | 0 | 0% |
| Fire Boat Slip | 237 | Change Order | 188 | 188 | 79% |
| TOTALS | 82,462 | | 188 | 3,239 | 4% |

* Volumes include Required and Allowable Pay Overdepth **100% Complete when approved by Owner

Sevenson Equipment List

| SES Equipment # | Make/Model | Description | Date Onsite | Hrs | Qty |
|-----------------|---------------------|-------------------------------|-------------|-----|-----|
| 526-E | JCB Lodall | Telescoping Forklift | 9/12/2016 | | 1 |
| 840-E | JCB Lodall | Telescoping Forklift | 9/13/2016 | | 1 |
| BB24420 | Seabox | Seabox | 9/13/2016 | | 1 |
| 1243-E | Sennebogen 860 | Material Handler | 9/13/2016 | | 1 |
| 1246-1B | Anvil 4Cy Clamshell | Clamshell Bucket | 9/13/2016 | | 1 |
| 1057-E | Cat 950 Loader | Loader | 9/14/2016 | | 1 |
| PF7-127RCT | Poseidon Barge 40' | 40'x10'x7' Barge | 9/14/2016 | | 1 |
| PF7-179QCT | Poseidon Barge 40' | 40'x10'x7' Barge | 9/14/2016 | | 1 |
| 247B008 | Poseidon Barge 40' | 40'x10'x7' Barge | 9/14/2016 | | 1 |
| PF7-128RCT | Poseidon Barge 40' | 40'x10'x7' Barge | 9/14/2016 | | 1 |
| 990EC | Shakerton Barge 40' | 40'x10'x5' Barge | 9/14/2016 | | 1 |
| 019917 | Shakerton Barge 40' | 40'x10'x5' Barge | 9/14/2016 | | 1 |
| J-111-E | Shakerton Barge 40' | 40'x10'x5' Barge | 9/14/2016 | | 1 |
| 990EJ | Shakerton Barge 40' | 40'x10'x5' Barge | 9/14/2016 | | 1 |
| 019919 | Shakerton Barge 40' | 40'x10'x5' Barge | 9/14/2016 | | 1 |
| 990ER | Shakerton Barge 40' | 40'x10'x5' Barge | 9/14/2016 | | 1 |
| 8721-E | Bumblebee Boat | Push Boat | 9/14/2016 | | 1 |
| PF2713QC | Poseidon Barge 20' | 20'x10'x5' Barge | 9/15/2016 | | 1 |
| PF27132QCT | Poseidon Barge 20' | 20'x10'x5' Barge | 9/15/2016 | | 1 |
| 227B006 | Poseidon Barge 20' | 20'x10'x5' Barge | 9/15/2016 | | 1 |
| 227B033 | Poseidon Barge 20' | 20'x10'x5' Barge | 9/15/2016 | | 1 |
| 247B034 | Poseidon Barge 40' | 40'x10'x7' Barge | 9/15/2016 | | 1 |
| 247C134 | Poseidon Barge 40' | 40'x10'x7' Barge | 9/15/2016 | | 1 |
| P114Q | Poseidon Barge 40' | 40'x10'x5' Barge | 9/15/2016 | | 1 |
| 990Ea | Shakerton Barge 40' | 40'x10'x5' Barge | 9/15/2016 | | 1 |
| 9928 | Shakerton Barge 40' | 40'x10'x5' Barge | 9/15/2016 | | 1 |
| 996EB | Shakerton Barge 40' | 40'x10'x5' Barge | 9/15/2016 | | 1 |
| 996EG | Shakerton Barge 40' | 40'x10'x5' Barge | 9/15/2016 | | 1 |
| 9649 | Shakerton Barge 20' | 40'x10'x5' Barge | 9/15/2016 | | 1 |
| 9947 | Shakerton Barge 20' | 40'x10'x5' Barge | 9/15/2016 | | 1 |
| 9648 | Shakerton Barge 20' | 40'x10'x5' Barge | 9/15/2016 | | 1 |
| 9650 | Shakerton Barge 20' | 40'x10'x5' Barge | 9/15/2016 | | 1 |
| 234056 | Seabox | Seabox | 9/15/2016 | | 1 |
| 1706-E | Tugboat | Shirley Tugboat | 9/15/2016 | | 1 |
| 1050-E | JCB 190 Skid Steer | Rubber Tire Skid Steer | 9/15/2016 | | 1 |
| 835-E | IR 185 Compressor | Air Compressor 185 | 9/15/2016 | | 1 |
| 1405-E | XQ60 Generator | Generator XQ60 | 9/15/2016 | | 1 |
| 1246-16 | Sennebogen 860 | Material Handler | 9/16/2016 | | 1 |
| 1458-E | Bag Filter Housing | Bag Filter Housing | 9/20/2016 | | 1 |
| 1716-E | Bag Filter Housing | Bag Filter Housing | 9/20/2016 | | 1 |
| 1673-E | Bag Filter Housing | Bag Filter Housing | 9/20/2016 | | 1 |
| 1718-E | Bag Filter Housing | Bag Filter Housing | 9/20/2016 | | 1 |
| 1674-E | Bag Filter Housing | Bag Filter Housing | 9/20/2016 | | 1 |
| 1762-E | Bag Filter Housing | Bag Filter Housing | 9/20/2016 | | 1 |
| 1318-E | Triumph 21' Boat | Boat | 9/20/2016 | | 1 |
| 670-E | Terex RL 400 Light | Light Plant | 9/20/2016 | | 1 |
| 1848-E | Komatsu PC 350 Ex | PC 350 Excavator | 9/20/2016 | | 1 |
| 1206-E | Genie Light Tower | Genie Light Tower / Generator | 9/21/2016 | | 1 |
| 999-E | Terex RL 400 Light | Light Plant | 9/21/2016 | | 1 |
| 1085-E | Cat 966 Loader | Cat 966 Front End Loader | 9/21/2016 | | 1 |
| RAKE ENDS | BARGE RAKE ENDS | BARGE RAKE ENDS | 9/23/2016 | | 2 |
| 1657-E | Dredge Tender | DSC Dredge Tender | 9/23/2016 | | 1 |
| 1720-83 | 7 Bells Tug | 7 Bells Tugboat | 10/6/2016 | | 1 |
| | | | | | |
| | | | | | |

[illegible]

Labor

| SES Personnel | | |
|---------------|------------------------|------|
| Shift: Day | | Hrs |
| 1 | General Superintendant | 12.0 |
| 0 | Project Manager | 0.0 |
| 2 | Project Superintendent | 24.0 |
| 0 | Timekeeper | 0.0 |
| 0 | QA/QC Manager | 0.0 |
| 1 | Surveyor | 12.0 |
| 0 | Mechanic | 0.0 |
| 0 | Health and Safety | 0.0 |
| 1 | Labor Foreman 172/472 | 8.0 |
| 2 | Laborer 172/472 | 16.0 |
| 2 | Operator 825 | 16.0 |
| 0 | Licensed Boat Op 25 | 0.0 |
| 0 | Mate 25 | 0.0 |
| 0 | Deckhand 25 | 0.0 |
| 0 | Dredge Op 25 | 0.0 |
| | | |
| | | |
| | | |
| | | |
| | | |
| | | |
| 9 | Totals | 88.0 |

| SES Subcontractor Personnel | | |
|-----------------------------|----------------------|-----|
| Shift: Day | | Hrs |
| 1 | Hydrographic Surveys | 8 |
| | | |
| | | |
| | | |
| | | |
| | | |
| | | |
| | | |
| | | |
| | | |
| | | |
| | | |
| | | |
| | | |
| | | |
| | | |
| 1 | Totals | 8.0 |

Day Shift
Employees **10**

Night Shift
Employees **0**

**Daily Total
Employees 10**

Day Shift Hours **96.0**

Night Shift
Hours **0.0**

**Today's Man
Hours 96.0**

Total Man Hours
to Date **2,455.0**

| SES Personnel | | |
|---------------|--------|-----|
| Shift: Night | | Hrs |
| | | |
| | | |
| | | |
| | | |
| | | |
| | | |
| | | |
| | | |
| | | |
| | | |
| | | |
| | | |
| | | |
| | | |
| | | |
| | | |
| | | |
| | | |
| | | |
| | | |
| 0 | Totals | 0.0 |

| SES Subcontractor Personnel | | |
|-----------------------------|--------|-----|
| Shift: Day | | Hrs |
| | | |
| | | |
| | | |
| | | |
| | | |
| | | |
| | | |
| | | |
| | | |
| | | |
| | | |
| | | |
| | | |
| | | |
| | | |
| | | |
| | | |
| | | |
| | | |
| | | |
| 0 | Totals | 0.0 |

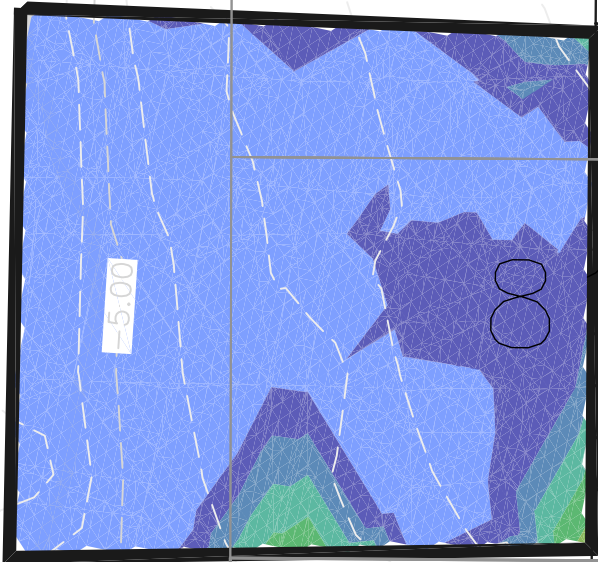
Total Man Hours
Since Lost Time
Incident **2,455.0**

Lost Time Incidents To-Date - 0

Last Lost Time Incident -
N/a

| Date | Dredge Area | Daily Total (SF) | Daily Total (CY) |
|------------|----------------|------------------|------------------|
| 10/14/2016 | Fire Boat Slip | 1,690 | 188 |

| COLOR TABLE | |
|---------------------|-------------|
| GREATER THAN 6 FEET | <div></div> |
| 4.0 TO 6.0 FEET | <div></div> |
| 3.0 TO 4.0 FEET | <div></div> |
| 2.0 TO 3.0 FEET | <div></div> |
| 1.5 TO 2.0 FEET | <div></div> |
| 1.0 TO 1.5 FEET | <div></div> |
| 0.5 TO 1.0 FEET | <div></div> |
| 0.0 TO 0.5 FEET | <div></div> |
| LESS THAN 0.0 FEET | <div></div> |



| DAILY DREDGE PROGRESS FIRE BOAT SLIP - 10/14/2016 | |
|---|---|
| BOROUGH OF STONE HARBOR STONE HARBOR MAINTENANCE DREDGING | |
| STONE HARBOR, NEW JERSEY | |
|  SEVENSON ENVIRONMENTAL SERVICES, INC. | |
| DRAWING | DATE: 10/17/2016 |
| | DRAWN BY: AKR |
| | CHECKED BY: |
| | CAD FILE: SH_FIRE_20161014_DPR_rev1.dwg |
| | SCALE: AS SHOWN |

1 Rev.1