



97th Street

OPEN SPACE AND PLAYGROUND

3/19/24

Further information and comments should be emailed to recdirector@shnj.org

Playground Removal

- ▶ After inspections of the playground from DPW and Gametime, it was determined both playgrounds were unsafe and needed to be removed.
- ▶ Salt air caused rust which was beyond repair
- ▶ Both playgrounds were removed, the swings remain
- ▶ 82nd has been filled with sand so the area can be utilized
 - ▶ Summer 2024 we will provide games/activities (giant jenga, checkers, connect 4, badminton, corn hole etc.)
- ▶ Looking to provide quality and inclusive playgrounds for our community

97th Street Open Space Grant

- ▶ Marc DeBlasio submitted an application to the county for an Open Space Grant for 97th street
- ▶ Includes the following:
 - ▶ Playground
 - ▶ Shade structures
 - ▶ Benches
 - ▶ Basketball Court
 - ▶ Resurface
 - ▶ Regulation Size
 - ▶ Building
 - ▶ Office and storage area
 - ▶ Bathrooms accessible to the public



NEW "COASTAL" BOCCIE COURT FABRIC COVER



NEW PLAYGROUND EQUIPMENT AND SURFACE PER RENDERING



NEW "COASTAL" BANNER
(TYPICAL)



NEW PLAYGROUND EQUIPMENT AND SURFACE PER RENDERING



PLAN
SCALE: 1"=30'



NEW "COASTAL" BENCH
(TYPICAL)



NEW "COASTAL" PLAYGROUND FABRIC COVER



NEW "COASTAL" SHADE PERGOLA WITH PICNIC TABLES



NEW "COASTAL" RECREATION SIGN



NEW "COASTAL" WATER STATION



NEW STONE HARBOR RECREATION CENTER

BASKETBALL COURT TO BE
RECONSTRUCTED TO STANDARD SIZE

NEW BASKETBALL COURT TO BE
WIDENED TO NEW FENCE LINE



CONCEPT PLAN
56TH STREET RECREATION
FACILITY IMPROVEMENTS
BOROUGH OF STONE HARBOR
CAPE MAY COUNTY, NEW JERSEY

DeBlasio & Associates
CONSULTING ENGINEERS AND PLANNERS

4001 NEW JERSEY AVENUE, WILMINGTON, NJ 08401
PHONE (856) 854-1001, FAX (856) 854-4323
DATED FEBRUARY 2024



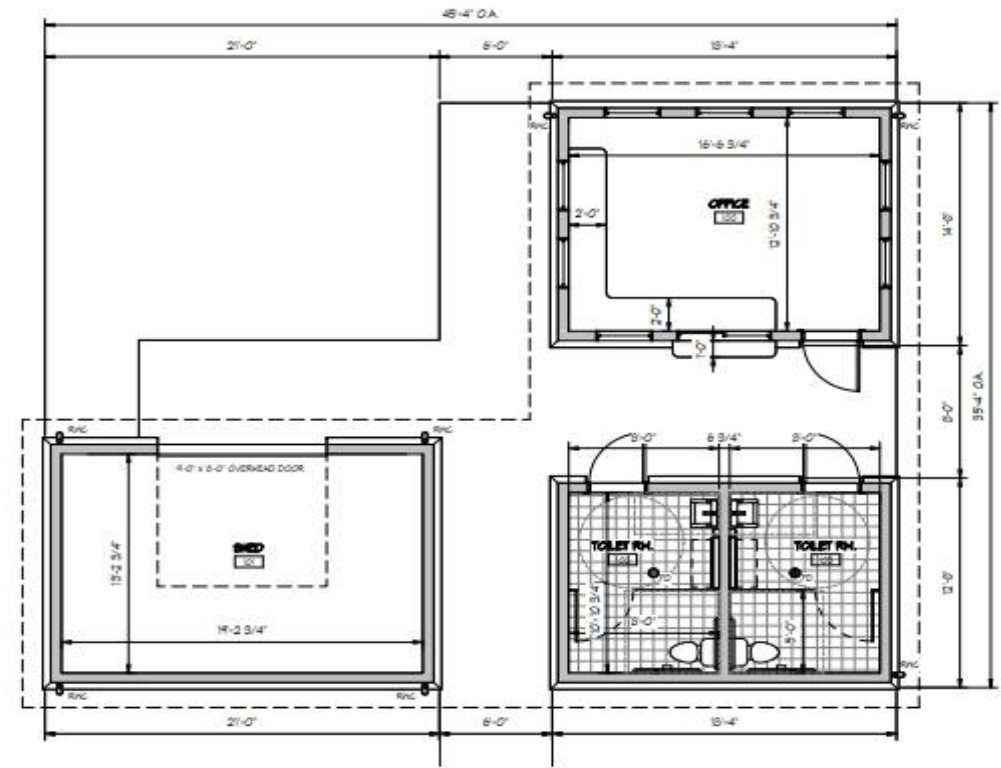
2 NORTHEAST PERSPECTIVE
SCALE: 1/2" = 1'-0"



3 SOUTHEAST PERSPECTIVE
NOT TO SCALE



4 SOUTHWEST PERSPECTIVE
SCALE: 1/2" = 1'-0"



1 GROUND FLOOR PLANS
SCALE: 1/4" = 1'-0"



5 BREEZEWAY PERSPECTIVE
SCALE: 1/2" = 1'-0"

97th Playground Proposed Plans

Key aspects considered when designing the playground

- ▶ Utilize materials that will withstand the elements living in a shore town
- ▶ Looked at past playgrounds and how we can prolong our playgrounds in the future
 - ▶ 82nd Street- 2015
 - ▶ 97th Street- 2010-2011
 - ▶ Chelsea Park- 2014
- ▶ Create an area that is inclusive and provides play pieces for all ages
 - ▶ Kompan has research based equipment and white paper case studies that go into their design
 - ▶ Also looked at a design from Game Time

Jake's Law

- ▶ Gov. Murphy signed in 2018
- ▶ Encourages counties in NJ to build inclusive playgrounds
 - ▶ Accessible by all children physically and mentally
- ▶ ADA accessible
- ▶ All children can play together without limitations

Inclusive Playground

Inclusive and thrilling playgrounds with universal design

Usable designs that unite in play

An important intention of the United Nations' Declaration on the *Rights of Persons with Disabilities* is to make public services and facilities equally accessible and welcoming for all citizens. It is called inclusion. The mission of inclusive play is to unite everyone and all abilities in play.

Inclusion vs. integration

Inclusion is a term coined during the 1990's. It replaced the term "integration", as "integration" suggests that individuals who are not like the norm are kept and treated in special units. The term "inclusion" suggests that there is no one norm, but many norms, and we all contribute to and benefit from society in varying degrees throughout life. The focus of the term inclusion is on what people can do, not what they cannot do. The illustration, based on the UNESCO Salamanca Declaration, says it all:

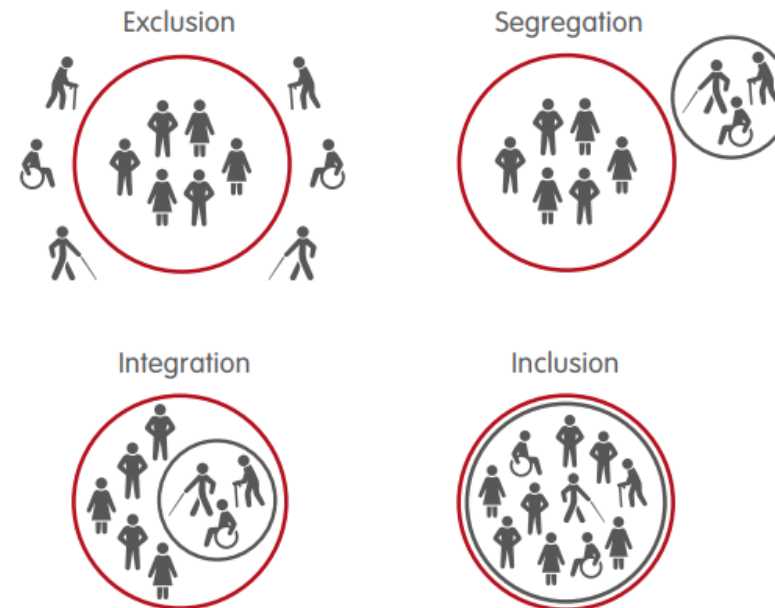


Figure 1

Equipment and Design

- ▶ Seamless playground that flows with play pieces for all ages abilities
- ▶ Meet the needs physically, socially and emotionally for children
 - ▶ Interaction
 - ▶ Play is important













Utilize materials that will last

WARRANTY

WE HAVE INDUSTRY-LEADING WARRANTIES



LIFETIME* Warranty

- Hot-Dip galvanized parts
- Stainless steel parts
- EcoCore™ and other high-density polyethylene (HDPE) parts



15-year warranty

- High-pressure laminate (HPL) parts
- Aluminum parts



10-year warranty

- Painted surface on galvanized or aluminum metal parts
- Pre-galvanized posts with painted top layer
- Electrogalvanized metal parts
- Solid plastic parts
- Wood-plastic composite parts
- Robinia, Siberian larch, pine, & other wood types
- Stainless Steel Slides
- Transparent Poly Carbonate (PC) parts
- Hollow plastic parts
- Rope and net constructions



5-year warranty

- Resin coated plywood parts
- Springs & ball bearing assemblies
- Graphic print on transparent PC panels
- Concrete parts
- Galaxy connection balls



2-year warranty

- Moveable plastic & metal parts
- Rubber membranes
- Screens and electronic parts
- Sunshades & sail solutions

KOMPAN's LIFETIME warranty is in effect for the lifetime of the product until the product is uninstalled and/or taken out of use. In addition, KOMPAN's general terms & delivery conditions apply and supplement this warranty.

Safety Surface Options

- ▶ Rubber Pour In Place
 - ▶ Surface at Chelsea Park
 - ▶ 5 year warranty
- ▶ Turf
 - ▶ Sand infill, rather than rubber
 - ▶ 12 year warranty
- ▶ Woodchips
 - ▶ Previous surface at 97th street

Estimated Lead Time

- ▶ 9-12 Weeks delivery
- ▶ 4 weeks Installation

Cost

Total Project Cost = \$1,901,500

Total Construction Cost= \$1,701,500

Borough covers engineering & inspection= \$200,000

Open Space if awarded is 60% of construction cost=
\$1,020,900

Borough match 40% of construction cost = \$680,600

+ \$200,000 for engineering & inspection

- \$78,000 from LRI Grant

Borough Responsible for \$802,600

