

# Stone Harbor Maintenance Dredging Stone Harbor, NJ



Weather  
**High** 60  
**Low** 35  
Precipitation  
**0.00"**

Report No.  
**13**

Project No.  
**1145**

Report Date:  
**11/09/15**

Day of Week:  
**Monday**



## Daily Progress Report

Copyright 2005, Severson Environmental Services, Inc.  
All Rights Reserved. ©

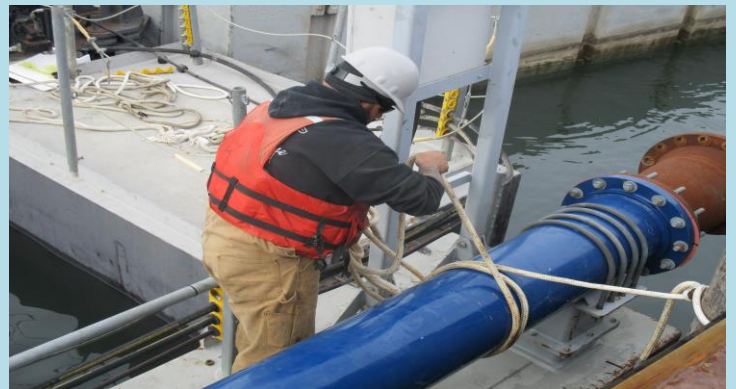
**Weather Conditions:**

**Rain**



**1** Grading the process pad.

**2** Placed the stacking conveyor into position.



**3** Tightening flange on the discharge side of Rain for Rent pump.

**4** Securing equipment to the bulkhead.



**5** Watersolve trailer.

**6** The two utility poles that were installed by Atlantic City Electric.

### Work Performed by Severson

- Continued to mobilize the process pad area.
- Continued to install the desanding shaker unit.
- Continued to stage and fusion weld HDPE pipe.
- Continued to procure and stage materials and equipment for future use.
- Continued installation of bag filter housings.
- Continued grading and leveling the process pad.
- Placed the stacking conveyor.

### Planned Activities

- Continue mobilization of all site equipment, materials and infrastructure.
- Continue fusing HDPE Pipe.
- Mobilize the Shark Dredge.
- Have Rogers & Cippolma supply power to the process pad.
- Complete installation of the desanding shaker.

### Safety Remarks

- No accidents or incidents observed or reported.
- Conducted daily safety meetings: Housekeeping

### Work Performed by Subcontractors

- Watersolve onsite to coordinate mobilization of the geotube system.
- Atlantic City Electric installed two utility poles and extended power to them.

### Remarks/Verbal Directives

- None.

### Equipment/Materials Delivered to Site

- Various HDPE fittings and pipe.
- Action Supply delivered 10 loads of DGA to the site: 258.81 tons.
- Josco Skidsteer off rent.
- Rental Country drill core off rent

### Production Tables

Adjusted Project Quantities					
Operation	Contract QTY	Over dredge	Redredge	Adjusted QTY	Unit
Dredge Qty					CY
Process Qty					Ton
Trucking Qty					Ton

Project Production to Date		
Operation	Comp to Date	% Complete
Dredge QTY(CY)		
Re-dig QTY(CY)		
Process QTY* (Tons)		
Trucking QTY (Tons)		
Scheduled Completion (Days)		
Rerun Days		

\*Note - Process quantity does include weight of added chemicals

Weekly Summary (Estimated)					
Date		Dredge QTY (CY)	Process QTY (Tons)	Reprocess QTY (Tons)	Trucking QTY (Tons)
04/13/15	Mon				Tons
04/14/15	Tue				Tons
04/15/15	Wed				Tons
04/16/15	Thu				Tons
04/17/15	Fri				Tons
04/18/15	Sat				Tons
04/19/15	Sun				Tons
<b>Weekly Totals</b>					<b>Tons</b>



