

**A PROPOSAL FOR THE SAFE, THOUGHTFUL AND PROGRESSIVE REOPENING OF  
THE COUNTY OF CAPE MAY IN THE TIME OF COVID-19**

RESPECTFULLY PRESENTED TO

**THE HONORABLE PHILLIP D. MURPHY  
Governor of the State of New Jersey**

By:

**THE CAPE MAY COUNTY-WIDE RECOVERY INITIATIVE**

**CAPE MAY COUNTY FREEHOLDERS AND CO-CHAIRS**

**VICE DIRECTOR LEONARD C. DESIDERIO, JR.  
FREEHOLDER WILL MOREY**

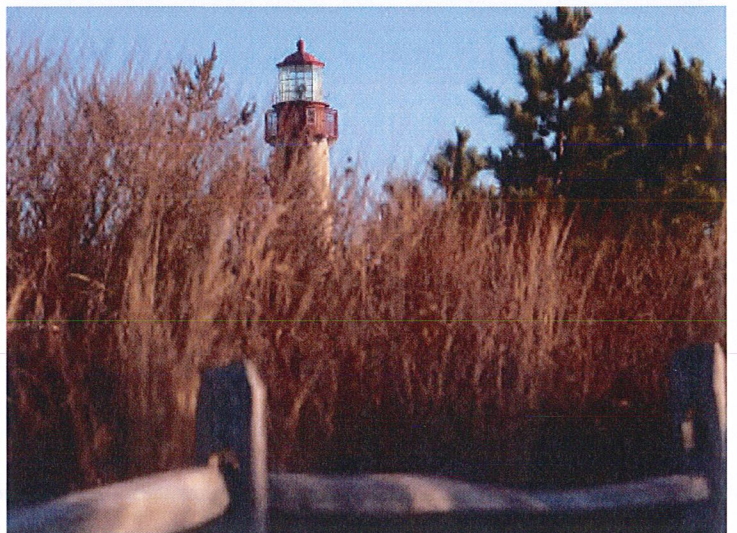
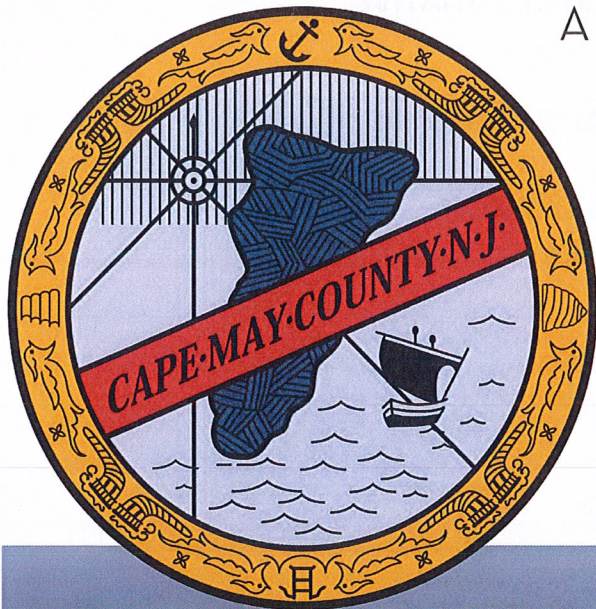
**MICHAEL J. DONOHUE (JSC, Ret.)  
Counsel to the Recovery Initiative**

**May 5, 2020**



# SAFE. SMART. PROGRESSIVE.

A proposal for reopening Cape May County



# BOARD of CHOSEN FREEHOLDERS

## COUNTY of CAPE MAY

4 Moore Road

Cape May Court House, N.J. 08210-1654

Phone: (609)465-1065 Fax: (609)465-6189

Website: [www.capemaycountygov.net](http://www.capemaycountygov.net)

GERALD M. THORNTON  
DIRECTOR  
*Administration,  
Emergency Management,  
Revenue & Finance,  
Tourism & Public Information*

LEONARD C. DESIDERIO  
VICE-DIRECTOR  
*Consumer Affairs,  
Public Offices,  
Public Safety*

E. MARIE HAYES,  
*Fare Free Transportation  
Park and Zoo*



WILL MOREY  
*Economic Development, Education,  
Engineering & Planning*

JEFFREY L. PIERSON  
*Health and  
Human Services*

Elizabeth Bozzelli  
*Administrator  
Clerk of the Board*

May 5, 2020

The Honorable Phillip D. Murphy  
Governor of the State of New Jersey  
225 West State Street  
Trenton, New Jersey, 08625

Dear Governor Murphy:

On behalf of the Cape May County Board of Freeholders and as the Co-Chairs of the Cape May County-Wide Recovery Initiative, we respectfully submit the attached: Proposal for the Safe, Thoughtful and Progressive Reopening of Cape May County in the Time of Covid, for your consideration. This document is the culmination of the extraordinary efforts of a consensus of our governmental and business sectors in consultation with health care professionals.

This submission details the following:

1. Cape May County has suffered a mild outbreak and a downward trend appears to be underway. The County's positive cases outside of Long-Term Care Facilities represents just 0.15% of such cases statewide and just 0.20% of Cape May County's total population.
2. Cape May County is unique in its contribution to the State's economy for its size and is also uniquely vulnerable economically given its utter dependence on the seasonal tourism industry. The potential dire consequence for the small businesses and working families of Cape May County cannot be overstated.
3. Cape May County's business and government sectors stand ready to implement and enforce extensive mitigation protocols in order to emulate to the greatest extent possible the prophylactic effects of the stay-at-home order.

4. A safe, thoughtful and progressive reopening of public facilities and businesses is proposed over the course of the next several weeks with an acknowledgment that a traditional Memorial Day weekend opening is not wise or feasible. Consensus has been built by and between our business community and our local and County governments to accept this reality and work with you and your administration on a reopening that invests in the safety of the community and the dampening of spread of the virus.

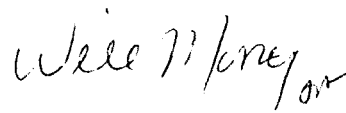
The County of Cape May is committed to a safe reopening. It is the goal of the Recovery Initiative to facilitate a progressive reopening of Cape May County over the next several weeks, subject to strict mitigation protocols and culminating in the most responsible reopening of many of its public and business facilities no sooner than June 1, 2020.

Thank you for your kind attention and consideration of this matter. We look forward to working with you in the best interest of the people of Cape May County and the State of New Jersey.

Respectfully,



Vice-Director Leonard C. Desiderio



Freeholder Will Morey

Cc: Mr. George Helmy, Chief of Staff  
Cape May County Board of Chosen Freeholders

## **Table of Contents**

Recovery Initiative Team .....	3
I. Background .....	4
II. Cape May County’s Mild Outbreak.....	5
III. Cape May County’s Uniquely Essential and Vulnerable Economy .....	6
A. Cape May County’s Essential Economic Status.....	6
B. Cape May County’s Unique Vulnerability .....	7
IV. Mitigation Protocols that Restore Function and Emulate Stay-at-Home.....	7
A. Protocols.....	7
B. Protocols as an Alternative to Stay-at-Home.....	8
V. Testing And Contact Tracing .....	12
A. Driving the Testing Message.....	12
VI. The Safe, Thoughtful and Progressive Opening of Cape May County.....	13
A. The Reopening Table – Building a Sustainable Ramp to our Core (July and August) Season....	14
VII. Areas of Special Consideration to Maximize Successful Compliance with Mitigation Protocols for Reopening and Recovery .....	18
A. Managing Capacity.....	18
VIII. Conclusion.....	19
APPENDIX ONE: PROTOCOLS .....	20
APPENDIX TWO: REOPENING TABLE .....	27
APPENDIX THREE: CAPE MAY COUNTY COVID+ DATA .....	31

## Recovery Initiative Team

### Business Task Force Members

Agriculture/Wineries	Allen Carter
Banking	Anthony DeSalle
Breweries/Distilleries	Ryan Krill
Campgrounds	Scott Turner
Commercial Fishing	Jeff Reichle
Construction/Trades	Brian Stuart
Cape May County Chamber of Commerce	Vicki Clark
Lodging	Curtis Bashaw
Real Estate	Kathy DiGuglielmo
Real Estate	Chris Bezaire
Retail	Joe Bogle
Restaurants	David Craig
Recreational Fishing	Irv Hurd
Services	Jacquelin Mauro
Technology	Casey Halverson

### Municipal Sector – Mayors

Avalon	Martin L. Pagliughi
Cape May	Clarence F. Lear III
Cape May Point	Robert Moffatt
Dennis Township	Zeth Mattalucci
Lower Township	Frank Sipple
Middle Township	Timothy C. Donohue
North Wildwood	Patrick Rosenello
Ocean City	Jay Gillian
Sea Isle City	Leonard Desiderio
Stone Harbor	Judith Davies-Dunhour
Upper Township	Richard Palombo
West Cape May	Carol Sabo
West Wildwood	Christopher J. Fox
Wildwood	Peter Byron
Wildwood Crest	Don Cabrera
Woodbine	William Pikolycky

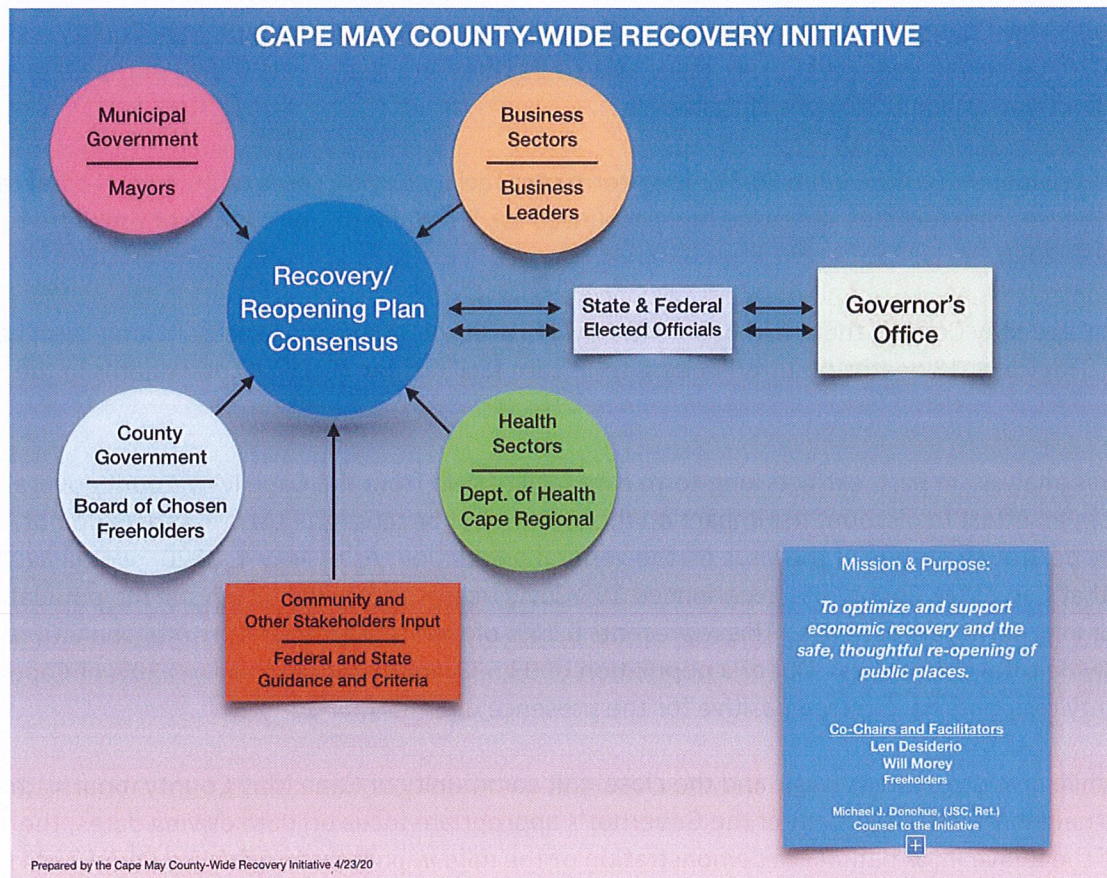
### Recovery Initiative Support Staff

Leslie Gimeno	County Planning Director
Diane Wieland	County Tourism Director
Joseph Molineaux	Consultant
Denise Beckson	VP/Morey's Piers
Robbie Matteucci	Research Analyst/Morey's Piers
Nina Ranalli	Chamber of Commerce

## I. Background

On April 14, 2020, the Cape May County Board of Chosen Freeholders, by Resolution 251-20, created a Business Recovery Task Force. The Task Force was assigned the mission to “assist the County of Cape May with its economic response to the Covid-19 pandemic.” The Task Force immediately sought and obtained the participation of more than a dozen Cape May County business leaders from a wide variety of industries as well as the Cape May County Chamber of Commerce representing scores of small businesses.

The Task Force transformed into The Cape May County-Wide Recovery Initiative with the mission: to optimize and support economic recovery and the safe, thoughtful reopening of public places. The Recovery Initiative obtained the unanimous support of all of Cape May County’s sixteen municipalities for the approach outlined in this presentation. A consensus was built to prepare and respectfully submit a plan for reopening Cape May County to the Governor that advances every measure reasonably possible to ensure the safety of the public while allowing needed economic activity to progressively begin.



Understanding the imperative of coordination with the healthcare community, the Recovery Initiative, aided by engagement with Cape Regional Health System and the Cape May County Health Department, has focused its attention on four key areas:

- Cape May County’s Mild Outbreak and Health Indicators

- Cape May County's Uniquely Essential and Vulnerable Economy
- Mitigation Protocols That Emulate Stay-At-Home
- The Safe, Thoughtful and Progressive Reopening and Recovery of Cape May County

## II. Cape May County's Mild Outbreak

This information is provided not to minimize the awful impact that the SARS-CoV-2 virus has had on the people of the state of New Jersey, but to offer a data-set comparison of Cape May County vis-à-vis New Jersey statewide totals. This comparison demonstrates that Cape May County has experienced a mild outbreak of Covid-19 infection. The Recovery Initiative is appreciative of the fact that the Governor is well conversant with these figures, however, the presentation of the comparison is essential for purposes of this submission.

As of May 4, 2020, according to the [NJ.gov/health](https://nj.gov/health) Covid Dashboard, New Jersey has experienced 126,744 Covid+ cases. Tragically, as of this date, 7871 New Jerseyans have been taken by the virus.

Cape May County has a total population of approximately 93,553. In Cape May County, as of May 4, 2020, there had been 344 Covid+ cases and 24 deaths. This represents 0.27% of the statewide total of Covid+ cases and 0.30% of all fatalities.

Statewide, there have been 20,841 long-term care facility Covid+ cases or 16.44% of total cases. Sadly, long-term care facilities statewide had accounted for 3,733 deaths, or 47.42% of the State total as of May 4, 2020.

In Cape May County, there had been 149 Covid+ cases, or 35.4% of all cases, in long-term care facilities. Tragically, 18 deaths occurred in long-term care facilities, or 75.1% of total deaths in the County.

This analysis, in part, extracts long-term care facility data from the Cape May County overall data, not in an effort to discount the impact on those lives, but because the total numbers do not accurately portray the effect of the virus on the general population. As of May 4, 2020, overall figures indicate that Cape May County has experienced 195 Covid+ cases and 6 deaths among the population outside of long-term care facilities. This represents 0.15% of the statewide Covid+ total and 0.07% of the statewide total of fatalities. Out of a population of 93,533, this means that only 0.20% of Cape May County residents have tested positive for the presence of SARS-CoV-2.

While any loss of life is tragic and the close-knit community of Cape May County mourns the loss of its neighbors, and cognizant of the Governor's appropriate focus on data driving dates, the import of the above information is a demonstration of the mild impact that Cape May County has been most fortunate to experience with regard to the spread of the virus. As a baseline for consideration of the readiness for a community to move towards reopening, the Cape May County data portrays an area where citizens have truly "flattened the curve," serving as a foundation for the implementation of further intelligent mitigation strategies to bolster this initial success.



The items contained in Appendix Three present a graphical representation of the above discussion. The graphs also show an established beginning of a downward trend in positive test results, with the expected peaks and valleys. All of this information combined points to data-supported conclusions that Cape May County's outbreak has been mild and that the County appears to be on a downward trajectory.

As you know, the federal Opening Up America Again guidance contains the following language:

*“State and local officials may need to tailor the application of these criteria to local circumstances (e.g. \* \* \* rural and suburban areas where outbreaks have not occurred or have been mild.)”*

Clearly, the intention of this language in the Opening Up America Again guidance is to allow for the reopening of areas of mild outbreak, to encourage economic activity so desperately needed throughout the country, and to allow citizens to restore a semblance of normality, and with it enhanced health, to their lives. This guidance is a particularly important when taking into consideration Cape May County's largely seasonal summer businesses, which are now on the brink of economic devastation.

### **III. Cape May County's Uniquely Essential and Vulnerable Economy**

#### **A. Cape May County's Essential Economic Status**

As the Governor is acutely aware, the economy of the State of New Jersey will need catalysts that drive commerce to restart our economic engine. Cape May County has been and will be an essential part of that process.

Cape May County consistently generates over \$6 billion in direct tourism revenue annually. The County also generates well in excess of \$500 million in state sales tax and local use taxes annually. This equates to approximately \$1.5 million per day. Of such taxes collected in New Jersey, this figure represents over 10% of the statewide total.

Tourism-related businesses created 26,572 direct jobs in Cape May County in 2018, the last year for which compiled data is available. Cape May County outpaces all other counties in the following categories:

- Food & Beverage - \$1.536 Billion
- Retail - \$1.28 Billion
- Recreation - \$771.4 Million
- Second Home Rentals - \$2.196 Billion

Cape May County is poised to do its part in the recovery of New Jersey's economy. The safe, thoughtful, and progressive reopening of Cape May County will not only squarely pursue public health,

but will allow for our local economy to avoid economic catastrophe and be a significant driver of the economic comeback for the entire State.

**B. Cape May County's Unique Vulnerability**

While Cape May County hosts a few of the more exclusive ocean-front communities in the State, its permanent residents are mainly hardworking, blue collar and middle-class residents. The average median household income in Cape May County from 2014-18 was \$63,690, according to Census data. The income per capita during that time period was just \$38,496. With regard to permanent residents, in a county of under 100,000 people, over 23% of the population is directly employed in retail or food service and accommodation. Nearly every sector of Cape May County's economy is dependent on the tourist season. Retail, recreational and commercial fisheries, accommodations, boardwalks and attractions, food service, eco-tourism, convenience stores, coffee shops, marinas, campgrounds, golf courses, wineries, breweries, home improvement, hardware, and scores of other businesses survive only because of the tourist trade. Cape May County, given its low per capita income and its utter dependence on tourism, stands in a uniquely vulnerable economic position.

*The Cape May County region is considered the 7<sup>th</sup> most vulnerable region in the United States if faced with a Covid-induced recession.*

*-The Places a Covid-19 Recession Will Likely Hit Hardest, The Brookings Institution, March 17, 2020*

New Jersey counties that host major industries or rely on agriculture-related or other employment have a better chance of withstanding the Covid-related economic downturn. Cape May County has no major industry but tourism. Even the truncation of the tourist season that has already begun is moving scores of small businesses into a dangerous liquidity condition. Each day that passes brings them closer to financial ruin. Only through the safe and timely opening of our business sector and public spaces can Cape May County avoid an unprecedented financial and personal calamity as families lose their business, their jobs, and the ability to provide for their families.

As will be detailed below, the Recovery Initiative believes that there is a path forward that can both avoid these calamities and be agreed upon by authorities at all levels. The mild outbreak in Cape May County coupled with comprehensive health and operational mitigation protocols will allow the County to reopen in a safe, thoughtful, and progressive fashion. Thus, Cape May County proposes a partnership with the State of New Jersey in pioneering the use of effective mitigation protocols and fostering business and societal innovations that will help to build resiliency into the long recovery ahead.

**IV. Mitigation Protocols that Restore Function and Emulate Stay-at-Home**

**A. Protocols**

It has become apparent throughout the world that society will not simply be able to return to the way things were prior to the arrival of SARS-Cov-2. Mitigation protocols that provide for protection

of the community in a manner that emulates stay-at-home results while safely restoring commercial and personal function are quickly being developed across public and private sectors of every nature.

As a result of the extraordinary efforts of a great many people across multiple business sectors in Cape May County, an appendix of industry mitigation protocols has been produced and included as Appendix One – The Protocols Appendix. The Protocols Appendix does not seek to be so wholly comprehensive that it covers every possible sector or facility, rather it is designed to provide specific content for certain sectors and accessible guides for others. The efforts of the restaurant, entertainment, and hospitality industries in New Jersey are good examples of particularly thoughtful and detailed plans. The protocols produced for these sectors are likely to become templates for such businesses throughout the region and form a solid foundation for protocols for other sectors. Many additional businesses and facilities are diligently compiling protocols that will be in place for application as the reopening effort moves forward. In certain cases, gaps are being filled by the many protocols that have been published by the Centers for Disease control. It is important to note that overlaying all of these protocols is perhaps the most important CDC protocol established: stay six feet apart, refrain from gathering in groups of more than ten people, and wash or sanitize your hands frequently. This guidance is the foundation upon which many other protocols are constructed.

As discussed below, mitigation protocols will be key to emulating the dampening effects on the spread achieved by stay-at-home orders but without the collateral adverse health issues being experienced. Through education of workforces and the public, adherence to these protocols will ensure that healthcare capacity will not be overwhelmed as society reopens.

## **B. Protocols as an Alternative to Stay-at-Home**

Along with the issuance of Executive Order 107, which has become known as the “Stay-at-Home” order, the State of New Jersey through the Department of Health and the Communicable Disease Service, issued a pamphlet entitled, “Social Distancing Guidance for Essential Retail Businesses.” It was impossible to know at the time that this would be the seminal document for the reopening of New Jersey, but its progeny of mitigation protocols is now vast.

### **1. Our Common Experience**

*“The best way to balance public health with civil liberties is with evidence.”*

*- Lawrence Gostin, Professor of Global Health Law, Georgetown Law School*

It has become apparent that there are at least two viable approaches to dampening the spread of the virus. One is the stay-at-home order as detailed in Executive Order 107 and other Executive and Administrative Orders. Another is to develop mitigation protocols for social distancing, personal protective equipment, sanitation, disinfection and employee monitoring that emulate the prophylactic effects of stay-at-home to the greatest extent possible. While scholarly analyses of mitigation protocols versus stay-at-home are not readily available, common experience has demonstrated that protocols are effective in preventing spread.

For many weeks now, populations have been gathering at the sites of essential businesses, most especially essential retail locations and restaurant take-out. Management of these facilities and their patrons have adhered to mitigation protocols. These protocols have clearly been effective in preventing the spread of the virus. Grocery stores, home improvement stores, gas stations and convenience stores, garden centers, restaurants for take-out, package goods stores and many other retail locations have remained open throughout the pendency of the stay-at-home order. Despite this fact, New Jersey has, in the main, succeeded in “flattening the curve” and preventing a hospitalization crisis.

This is the best evidence of two very critical components of any reopening plan: (1) that mitigation protocols work and (2) that businesses and their patrons can responsibly follow such protocols. Additionally, application of the protocols has proven effective regardless of the number of patrons seeking to access these locations. Essential retail locations and restaurants have managed to handle capacity and flow of patrons both inside and outside of these locations. Lines of people are not unusual and social distancing, the wearing of masks and other mitigation has been adhered to by those waiting in line as well as by those shopping. This has quickly become the norm and members of society have generally adapted and accepted these protocols.

The only logical and rational conclusion to be reached from this common experience is that our society can accept and comply with strict mitigation protocols in every aspect of daily life. The demonstrable success of such protocols regarding essential retail leads to the conclusion that such protocols would be effective in the context of other retail establishments.

Our common experience also demonstrates that essential businesses and governmental organizations that do not cater to invitees have also been effective in implementing employee monitoring and mitigation protocols that dampen the spread of the virus, since we have not seen a clustering of outbreaks associated with these areas. In this same vein, essential retail locations have implemented effective mitigation and monitoring protocols with their large workforces for weeks now.

These conclusions are more than anecdotal, they are demonstrable as evidenced by the lack of outbreaks associated with the continuing operation of essential businesses and governmental locations throughout the pandemic.

Accordingly, it is reasonable to conclude that mitigation protocols will be effective regardless of human density as long as they are adhered to. Each person in or coming to Cape May County has lived our common experience. All are now adapting to and adhering to the mitigation directives already in place. For most, these protocols will not dramatically change what they are already doing. They will still be wearing masks and social distancing. They will still be congregating only with their family units or other discrete, small groups. The unique challenges of a tourist location with regard to fluctuating population levels should not preclude that location from economic survival. Additionally, the Stockton University William J. Hughes Center for Public Policy, in its Spring 2020 South Jersey Economic Review, estimated what it called a 25% Covid-drag on South Jersey economies in the near term. Consequently, it is reasonable to predict that the number of visitors to Cape May County will, during the 2020 season, be below what has been typical.

In addition to tourists, another category of persons added to the broader milieu is the employees of newly reopened businesses. Again, all of these individuals have been participating in mitigation for weeks. It is also apparent from the involvement of the Business Sector of the Recovery Initiative that hiring has been cut back and will increase gradually as the progressive reopening advances. Additionally, it is in the interests of these business owners to ensure effective training in and strict compliance with sector protocols. Failure to do so would represent just as grave an existential economic threat to their enterprises as the current stay-at-home order.

Following the progressive timing for reopening as detailed below will allow for all businesses to thoroughly educate their employees and prepare for welcoming patrons.

It is worth restating that implementation of the mitigation protocols will be the key component of successfully managing capacity and reopening while dampening viral spread.

## **2. Calling Upon Business and Societal Innovation**

Businesses small and large start and thrive through innovation. Innovation in planning, safety, risk management, construction, marketing, financing and other aspects of commerce have been the hallmark of the American economy since its inception. That same tradition and spirit of innovation is what will lead America back now. Living, working, and safely functioning in the time of Covid-19 will advance through the innovative approaches of small businesses and enlightened governmental entities to develop and utilize mitigation protocols that emulate stay-at-home.

Two months ago, “Zoom” meant “going fast.” Now, it means something completely different due to the innovation and adaptation of members of society. Recently, and nearly overnight, citizens were told they should wear masks to cover their noses and mouths to help slow the spread of the virus. The next day millions of New Jersey residents wore masks when they went out into public. They sat at their sewing machines or followed instruction on YouTube and fashioned homemade masks for themselves and their families in order to comply with direction and help keep everyone safe. There was no massive education campaign required and no serious, widespread enforcement necessary. Citizens have been advised to stay six feet apart from other people who are not part of their family or other discrete group. And each day millions of citizens walk through their neighborhoods and parks keeping their distance without significant governmental oversight or enforcement.

All of these early protocols and lifestyle changes have benefitted from societal innovations. Unleashing this innovative spirit through the safe, thoughtful and progressive reopening of our businesses and public spaces will inevitably lead to important and unforeseen innovations that assist all of society as we adapt to the “normal for now” realities of life during the time of Covid-19.

Accordingly, the Cape May County-Wide Recovery Initiative challenged its participants to consider and prepare strict mitigation protocols for their areas of concern. As can be seen in the Protocols Appendix, innovative, effective, and defensible protocols are ready for application across the full spectrum of business and government facilities. All available evidence indicates that society will adapt and comply. Cape May County respectfully submits that the utilization of these mitigation protocols will allow for society to reopen while continuing to dampen spread in a manner that approximates the effects of stay-at-home.

3. Protocols to Provide Special Access and Protection for Seniors and Vulnerable Members of the Community

*“When developing mitigation plans, communities should identify ways to ensure the safety and social well-being of groups that may be especially impacted by mitigation strategies, including individuals at increased risk for severe illness”*

*-The Centers for Disease Control*

Consistent with the guidance of the Cape May County-Wide Recovery Initiative, businesses and municipalities will set aside times and/or locations within their establishments or government facilities for special, limited access by Senior Citizens or other particularly vulnerable persons. Special shopping or services times will be established. Municipalities and private entities will reserve beach, park, pool, recreation, and other areas for Seniors and the vulnerable to maximize access to these important facilities while minimizing the risk to these populations. Through signage and public address announcements, businesses and local governments will ensure adherence to these time and place protocols. Mitigation protocols related to social distancing, personal protective equipment, sanitation, disinfection and employee monitoring that emulate the prophylactic effects of stay-at-home will be ubiquitous and will persist following the current guidance of state and federal authorities.

4. Representative Mitigation Protocols

Detailed sector-specific protocols are included in the Protocols Appendix. However, all facilities and spaces are expected to employ the use of mitigation protocols and follow recommendations from the Centers for Disease Control. These CDC recommendations are implicitly incorporated by reference into each sector protocol.

In compliance with the Opening Up America Again criteria, state guidance, and building upon the common experience of essential retail success, the following minimum mitigation protocols will be in effect for all business and governmental facilities for which specifically tailored protocols are not necessary:

- a. **Social Distancing:** All persons who are not part of an existing, noninfected pod of individuals, such as families or other discreet small groups, will be required to remain at least six-feet distant from each other.
- b. **Personal Protective Equipment:** All persons will be required to utilize an effective covering of the nose and mouth designed to maximize the prevention of distribution or inhalation of vapor droplets from the respiratory system. Employees will be instructed on the proper use of gloves or other barriers to transmission by touch and will be required to utilize the same at all times.

- c. **Employee and Management Monitoring:** Many public and private employers will be offering both virus and antibody testing to their employees prior to commencing operations. All employees and members of management of all business and public operations will be continually monitored for body temperature and symptom concerns. Temperature baselines will be detected and recorded for comparison to regular temperature monitoring. Any employee or member of management showing symptoms or an elevation of body temperature will be immediately removed from the workforce and sent for testing and isolation. Tracing, and if necessary removal and/or isolation, of employee contacts will immediately commence and preventative measures ranging from disinfection of work areas to closure of part or all of a facility will take place until such time as broader disinfection can occur.
- d. **Sanitation:** All employers, public and private, will engage in strict sanitation protocols. All refuse will be handled by employees in personal protective equipment that includes, at a minimum, face-coverings and gloves. Refuse will be constantly monitored and frequently removed to closed containers. Industry specific sanitation protocols have been developed and will be implemented and followed, especially as relates to food service and accommodations, as more fully set forth in the protocols included in the appendix.
- e. **Disinfection:** All disinfection will follow the guidelines provided by the Centers for Disease Control, at a minimum.<sup>1</sup> Disinfection will be frequent and thorough and effectuate by use of EPA and/or FDA approved and effective microbial disinfectants.

## V. **Testing And Contact Tracing**

The County of Cape May does not intend to be a passive observer in this important aspect of the reopening and recovery process. The County has identified funds that can be utilized to put in place a broad testing capacity. Discussions with several potential testing equipment vendors are well underway. It is the goal of the County of Cape May to stand-up a robust, widely accessible and traceable network of medically supervised testing points throughout the County as soon as practicable.

### A. **Driving the Testing Message**

The Recovery Initiative has enlisted the services of the County of Cape May's Tourism and Public Relations Departments as well as those of a private communications vendor in order to create and implement messaging to encourage members of the public to submit for viral and antibody testing. With an appreciation for the fact that data show that certain socio-economically-challenged communities have been underserved when it comes to testing, the County of Cape May will partner with a testing vendor(s) and provide funding to cover the costs of testing for those without the ability to pay.

---

<sup>1</sup> <https://www.cdc.gov/coronavirus/2019-ncov/community/disinfecting-building-facility.html>

With regard to public encouragement regarding testing and other aspects of living safely in the time of Covid-19, the Recovery Initiative will seek to utilize the Emergency Broadcast System to distribute frequent messages to the public to encourage testing and to reinforce the need for following social distancing and other mitigation protocols. Allowing for local customization of such messaging would, in all likelihood, increase the creativity and effectiveness of the effort. The Recovery Initiative is also utilizing its support from the Mayors of all of Cape May County's sixteen municipalities to encourage the use of local reverse-911 registries to send frequent reminders with regard to testing and mitigation protocols. Additionally, the Recovery Initiative is exploring the efficacy of utilizing a private vendor for allowable cellphone text push notifications.

As indicated above, through innovation in all realms, our society is capable of adapting and safely functioning in the time of Covid-19.

**B. Employee and Management Voluntary Testing**

Businesses will be required to submit employees and management for both viral and antibody testing with a significant number already beginning this process. In this manner, many business enterprises will have a concrete baseline of uninfected employees and management as they reopen.

**C. Contact Tracing**

The County of Cape May Department of Health has been engaged in effective contact tracing for some time. Contact tracing is conducted by the Department of Health on a daily basis telephonically, and the Department is in discussions to move to a computer-based system.

The Cape May County-Wide Recovery Initiative stands ready to assist the State of New Jersey in any enhanced testing and contact tracing program that may be contemplated or instituted. In an effort to attempt to move forward expeditiously on this front, the Recovery Initiative is pursuing multiple efforts related to testing and contract tracing.

An effort is underway to enlist Cape May County volunteer Fire and Emergency Medical Services members to supplement the County in its commitment to begin active and robust contact tracing. This dedicated base of volunteers is a natural and professional fit for contact tracing efforts that is proven to reduce viral spread. The Recovery Initiative is confident that it will be able to put in place the 15-81 contact tracers per 100,000 people as recommended by the New Jersey Communicable Disease Service.

**VI. The Safe, Thoughtful and Progressive Opening of Cape May County**

All efforts of the Cape May County-Wide Recovery Initiative have been based first in safety and built upon the steps taken by federal, state and local authorities for the protection of our citizens. Consistent with those steps, we believe that the course charted herein provides for a reasonable, intelligent and safe process for the reopening of the businesses and public facilities of Cape May County.



**A. The Reopening Table – Building a Sustainable Ramp to our Core (July and August) Season**

Giving close consideration to current Cape May County outbreak data and the purpose of current gubernatorial Executive Orders balanced against the substantial weight of personal and business economic interests in Cape May County on the other, the Recovery Initiative has compiled a central guiding document for easy reference to various sectors and facilities. This Cape May County-Wide Reopening Table is an important planning document and is included herewith in Appendix Two. Within the table are recommended dates of reopening, minimum mitigation protocol items, as well as limitations or restrictions that require State modification as a prerequisite.

It is long established that businesses must have a symbiotic relationship with governmental entities, especially local government, in order to thrive. The collective IQ, resource, influence and close collaboration of State, County and Municipal government has never been more important than now when many businesses stand on the brink of failure. And, public-private relationships must now be stronger than ever to allow for an effective reopening of businesses and to achieve an advancing and sustainable recovery over time. The Reopening Table is a product of this level of cooperation. Representatives from a multitude of industries, enterprises and public entities have dedicated countless hours to the thoughtful consideration of a safe path for reopening. Several of the items on the Reopening Table are discussed below in detail.

It should be restated here that in addition to industry-specific protocols, all sectors and facilities must adhere to the aforementioned general mitigation protocols assuring the use of personal protective equipment such as masks and gloves, proper social distancing, sanitation and disinfection. These are understood to be indispensable components of any reopening plan.

**1. Timing for Resuming Short-Term Rentals**

As detailed in the Reopening Table, it is the goal of the Recovery Initiative that short-term rentals recommence according to the following progression:

**a. Hotels/Motels**

Hotels would begin operations at 60% of capacity, with appropriate mitigation protocols, on June 1, 2020. Thereafter, hotels would move to full capacity on June 22, 2020. The industry has provided a comprehensive mitigation protocol, included in the Protocol Appendix, that would be universally followed.

**b. Other Rentals**

Other residential rental units would follow a phased reopening as well. As of Monday, May 11, 2020, rentals with a duration of over thirty days including those to seasonal employees, would commence. Rentals of a duration of less than thirty days would begin on June 1, 2020. Again, a sector mitigation protocol would be strictly followed.

**2. Beaches**

As detailed in the Reopening Table, all beaches, as many are now, would be open for active recreation in compliance with Executive Order 107, such as walking, jogging, fishing and other activities that limit congregation and allow for easy social distancing. Each community will necessarily need to assess its own resources and logistics when it comes to bathing at beaches protected by Beach Patrols. Some suggestions in this regard related to capacity management are included below. Enforcement decisions regarding the above restrictions are necessarily left to each municipality and will be easier for certain municipalities than others to accomplish. Every participant in the Recovery Initiative understands that these are not typical enforcement issues. Enforcement here is not about crowd control to prevent disorderly conduct. Enforcement under these circumstances, as with all of the industry protocols being established, is imperative to our continuing efforts to prevent an outbreak of the virus.

During the recovery phase, nothing will be more harmful than a localized outbreak that will very likely impact neighboring communities. It may be necessary for municipalities to consider adding additional staff or entering into Interlocal Services Agreements in order to bolster the ability to enforce social distancing requirements, especially in the early weeks of the recovery. This effort will be paramount to maximizing the chances of a reopening and recovery without outbreaks.

The Recovery Initiative recommends that on June 1, 2020 all beaches be fully open for active and passive recreation subject to state directives and local discretion. All activities would remain subject to social distancing and groups would be limited to no more than ten people in accordance with CDC guidance. When beaches fully open, oceanfront communities that have the ability to do so will offer additional Beach Patrol locations in order to open waters as much as possible. In this manner, the “clumping” of beachgoers in the areas of lifeguard stands can be minimized and beachgoers will naturally spread out over a larger area.

### **3. Boardwalks**

At the moment, the Wildwoods’ boardwalks remain open with restrictions as detailed in Executive Order 107. Essential businesses, including food service for take-out, may be accessed. Passive recreation or other uses are disallowed. As of this writing, other boardwalks in the County are closed and no use is allowed.

The proposal of the Recovery Initiative is that all boardwalks be opened for the purpose of accessing essential businesses.

Active recreation would then be allowed starting May 11, 2020. Again, social distancing would be required and gathering, and idling would be prohibited.

On June 1, 2020, all boardwalks and related businesses and facilities would open for full use. All public and business facilities related to boardwalk opening would be subject to industry protocols and best practices for social distancing, personal protective equipment, sanitation, disinfection and employee monitoring. The above comments on enforcement are restated here.

### **4. Other Sectors and Facilities**

The Recovery Initiative recognizes that there are scores of other business sectors and facilities, both public and private, which face their own set of challenges for reopening and recovery. The Reopening Table attempts to address as many of these issues as possible and will be updated as necessary to add any additional business and facility types. Several additional industries are highlighted below due to their size and/or complexity. Please refer to the Reopening Table for other sectors.

**a. Campgrounds**

The campground industry is well organized and has prepared mitigation protocols similar to the hotel industry for personal protective equipment, employee monitoring, sanitation, disinfection and social distancing. The expectation is that campgrounds will follow a similar temporal progression as other short-term rental facilities.

Campgrounds opened by State action for seasonal visitors on May 2, 2020. It is recommended that campgrounds open for shorter-term visitors on June 1, 2020.

**b. Bars, Restaurants, Wineries, Breweries, Distilleries and Other Similar Sectors**

Many restaurants and similar establishments have remained open for takeout only, as allowed by Executive Orders. It is expected that this will continue, however, the further opening of restaurants, bars and other similar sectors such as breweries, wineries and distilleries is needed.

Municipalities will play an outsized roll in the prospects for success for reopening restaurants and bars. Accordingly, we recommend that communities provide for the temporary relaxation of zoning and Alcoholic Beverage Control requirements in order to allow restaurants and bars to utilize surrounding outdoor spaces such as sidewalks and parking lots in an effort to maximize social distancing and minimize the potential for spread. As with all of these challenges, municipal customization will be likely. However, all municipalities are encouraged to adopt such approaches in an effort to provide maximum support to these very important sectors.

**i. Bars, Breweries, Wineries and Distilleries**

Bars with related package goods licenses have remained open for the sale of package goods, and this essential designation continues. Wineries, breweries and distilleries have operated in a similar fashion and continue to do so.

These locations would open for outdoor service similar to restaurant outdoor dining on May 26, 2020. Maximum capacity would be 75% of fire code limitations or a capacity reached by placement of customer seating areas at least six-feet apart from one another, whichever allows for greater social distancing. No activity between individuals would be permitted that would be contrary to social distancing and other mitigation requirements, such as dance floor use or other uses that encourage or lead to congregation. Service would cease at midnight each night.

Indoor service, again subject to strict social distancing requirements and mitigation protocols, would commence on June 1, 2020 and be limited to 65% of fire code capacity or a capacity reached by placement of customer seating areas at least six-feet apart, whichever allows for greater social distancing. Restrictions on group size and congregation would continue to apply.

## ii. Restaurants

Many restaurants have continued operating under an essential designation for take-out only. These operations continue.

Restaurants, similar to bars, would open for outdoor dining on May 26, 2020. Maximum capacity would be 75% of fire code limitations or a capacity reached by placement of customer seating areas at least six-feet apart from one another, whichever allows for greater social distancing.

On June 1, 2020, restaurants would open for indoor dining. Maximum capacity would be 65% of fire code limitations or a capacity reached by placement of customer seating areas at least six-feet apart from one another, whichever allows for greater social distancing.

As with all sectors, restaurants will strictly adhere to mitigation protocols. The industry has created a detailed, intelligent and effective mitigation protocol that is included in the Protocol Appendix.

## 5. Retail

Essential retail businesses have been operating for a period of weeks under limitations on occupancy and with social distancing requirements. This experience will no doubt guide policy makers at the state level when it comes to a broader reopening of retail businesses. Again, this industry faces unique challenges.

As with essential retail now, broader retail reopening will require limitations on the number of patrons in the store and social distancing among those patrons and employees. Protocols are also being developed throughout the retail sector. In this context, retail is considered to include personal services such as hair salons, nail salons, barbershops and the like.

Retail would also phase its opening. On May 11, all retail establishments would be permitted to sell items for pick-up. Utilization of masks and other essential personal protective equipment will be paramount for retail operations.

On June 1, 2020, indoor retail shopping would commence. As has been the practice with essential retail over the past several weeks, retail establishment must ensure social distancing and control the number of patrons inside at any given time in order to provide the ability for patrons to stay at least six-feet apart. Retail operators are also responsible for making certain that all employees and customers are wearing masks and other appropriate personal protective equipment.

As with restaurants, municipalities may also be able to allow for the outdoor placement and sale of retail goods where same can be accomplished without blocking rights-of-way or otherwise creating social distancing challenges.

## **6. Public Facilities**

There are a host of public facilities that are now closed, beyond just beaches and boardwalk. County and municipal administration buildings, courts, recreation facilities, parks, playgrounds, public restrooms and other facilities will need to come on-line to support the reopening and recovery effort. As with business facilities, a phased approach will be necessary. While much of the timing related to the opening of these facilities will, as with all facilities, be dependent to a great extent on state directives, the Recovery Initiative has requested, with positive response, that municipalities adopt an approach designed to sync the opening of municipal facilities as closely as possible with business facilities.

On May 2, 2020, in accordance with the Governor's allowance, State and County parks and public and private golf courses reopened. On May 11, 2020, other outdoor parks, playgrounds and recreation areas that may be closed would open for active recreation with appropriate social distancing requirements. All other municipal facilities would open on June 1, 2020, or as local conditions dictate. Just as it is critical that municipalities support the business community, the business community must similarly assist municipalities. To that end, business owners will take measures, such as the posting of signs within their business locations, detailing the limitations appurtenant to municipal facilities and encouraging adherence to same.

## **VII. Areas of Special Consideration to Maximize Successful Compliance with Mitigation Protocols for Reopening and Recovery**

### **A. Managing Capacity**

The overall capacity of every business establishment and every public area must be managed. The Recovery Initiative has developed, and many businesses and local governments will utilize, certain strategies to manage capacity.

#### **1. Signage, Banner-Planes and Public Address Systems**

By utilizing seashore-themed signage with messages related to social distancing and cleanliness, municipal governments and businesses can creatively remind visitors and employees of the need for vigilance in this regard. The Recovery Initiative encourages the widespread use of such signage and has developed samples that will be provided to businesses and governmental agencies. Consistency in messaging will be beneficial and supportive of the overarching Cape May County effort. The use of banner-plane messages is also part of the plan. The tradition of banner-plane advertising to the beach and boardwalk audience is well-established in its effectiveness and will prove a useful tool in driving the mitigation message.

Additionally, many of our communities utilize or have the ability to utilize public address systems in areas of public accommodation or even throughout the town. These systems will be

invaluable for driving creative and positive messaging to consistently remind people to follow social distancing and mitigation guidelines.

## **2. Reservation and Ticketing Systems Options**

Most people are familiar with online reservation and ticketing systems. Businesses that don't typically utilize such systems, even retail establishments and bars, should give serious consideration to doing so. Retail could effectively take reservations in blocks of time and control the number of customers in the store. Online ticketing systems function in a similar manner and create a virtual ticket for entry. This will provide certainty and convenience for customers while effectuating efficient capacity management for business owners. It would also be possible for governmental entities to utilize such services for appointments with government officials or even for access to particularly popular parks, beaches and recreation areas.

## **VIII. Conclusion**

The Cape May County Board of Chosen Freeholders, through its Cape May County-Wide Recovery Initiative, appreciates the Governor's consideration of this proposal. The Recovery Initiative has brought together the time and talents of myriad business professionals and governmental leaders in order to present this comprehensive plan. With a constant eye on safety, innovation, and evolution, the Recovery Initiative positions Cape May County for a safe, thoughtful and progressive reopening and requests the Governor's support and endorsement.

## **APPENDIX ONE: PROTOCOLS**

This appendix contains protocols for safety, sanitation, and operations for businesses to refer to upon reopening. It is organized by industry and contains both industry association recommendations, as well as input from local stakeholders.

### **Contents of This Appendix**

<b>AGRICULTURE / FARM STANDS .....</b>	<b>21</b>
<b>BREWERIES / DISTILLERIES .....</b>	<b>21</b>
<b>CAMPGROUNDS .....</b>	<b>21</b>
<b>COMMERCIAL FISHING .....</b>	<b>22</b>
<b>COMMUNITY AND FAITH BASED ORGANIZATIONS .....</b>	<b>22</b>
<b>CONSTRUCTION .....</b>	<b>22</b>
<b>HOTELS .....</b>	<b>22</b>
<b>PUBLIC SPACE: BOARDWALKS/COMMERCIAL RECREATIONAL ATTRACTIONS.....</b>	<b>23</b>
<b>RECREATIONAL FISHING / SIGHTSEEING VESSELS .....</b>	<b>23</b>
<b>RESTAURANTS .....</b>	<b>23</b>
<b>RETAIL .....</b>	<b>24</b>
<b>REAL ESTATE .....</b>	<b>24</b>
<b>SERVICE BUSINESSES (BARBERSHOPS, NAIL SALONS, GYMS) .....</b>	<b>25</b>
<b>TECHNOLOGY.....</b>	<b>25</b>
<b>WINERIES .....</b>	<b>25</b>

## **AGRICULTURE / FARM STANDS**

*Please note that all businesses must follow protocols as outlined in “Representative Mitigation Protocols” in the main document above, including: social distancing, personal protective equipment, employee management and monitoring, sanitation, and disinfection.*

Rutgers Extension COVID Guidance for Agriculture, Environment and Natural Resources, Fisheries and Aquaculture: <https://njaes.rutgers.edu/covid-19/>

Farm Stands: National Retail Federation - Path to Reopen Retail: <https://nrf.com/resources/operation-open-doors>

Local Industry Input/Guidance:

- Create online ordering / drive-through pickup of items if possible.
- Allow alternative marketing/retail sales such as mobile Fruit/Vegetable/Flower trucks.
- U-Pick operations: farmer to provide bags (no outside bags or containers allowed); product will be sold by bag size, not weight; limits on # of visitors (1 adult per visit); requiring PPE.
- Livestock farm/education: reconfigure pen setup for social distancing for visitors.

## **BREWERIES / DISTILLERIES**

*Please note that all businesses must follow protocols as outlined in “Representative Mitigation Protocols” in the main document above, including: social distancing, personal protective equipment, employee management and monitoring, sanitation, and disinfection.*

NJ Hospitality & Restaurant Association Guidance:

[https://www.njrha.org/uploads/1/1/3/8/113818341/njrha-safe\\_dining\\_re-re-opening\\_plan.pdf](https://www.njrha.org/uploads/1/1/3/8/113818341/njrha-safe_dining_re-re-opening_plan.pdf)

Local Industry Input/Guidance:

- Support flexible workplace accommodations for those impacted.
- Same maximum occupancy as bars and restaurants; maximum capacity of 75% for outdoor spaces; 65% for indoor spaces.

## **CAMPGROUNDS**

*Please note that all businesses must follow protocols as outlined in “Representative Mitigation Protocols” in the main document above, including: social distancing, personal protective equipment, employee management and monitoring, sanitation, and disinfection.*

Cape May County Association Guidance: [https://docs.google.com/document/d/1W3n-lcM7\\_g8\\_FJaboDWXD6A4N9Irv98\\_uV1FwTS88-A/edit](https://docs.google.com/document/d/1W3n-lcM7_g8_FJaboDWXD6A4N9Irv98_uV1FwTS88-A/edit)

Local Industry Input/Guidance:

- Phase in approach, beginning with seasonal and long-term customers.
- Slow initial surge of campers by adjusting check-in dates/times.



## **COMMERCIAL FISHING**

*Please note that all businesses must follow protocols as outlined in “Representative Mitigation Protocols” in the main document above, including: social distancing, personal protective equipment, employee management and monitoring, sanitation, and disinfection.*

Rutgers Extension COVID Guidance for Agriculture, Environment and Natural Resources, Fisheries and Aquaculture: <https://njaes.rutgers.edu/covid-19/>

## **COMMUNITY AND FAITH BASED ORGANIZATIONS**

*Please note that all businesses must follow protocols as outlined in “Representative Mitigation Protocols” in the main document above, including: social distancing, personal protective equipment, employee management and monitoring, sanitation, and disinfection.*

Centers for Disease Control and Prevention guidance: <https://www.cdc.gov/coronavirus/2019-ncov/community/organizations/index.html>

## **CONSTRUCTION**

*Please note that all businesses must follow protocols as outlined in “Representative Mitigation Protocols” in the main document above, including: social distancing, personal protective equipment, employee management and monitoring, sanitation, and disinfection.*

Local Industry Input/Guidance:

- Hold sub-contractors to same standard as contractors.
- Provide frequent breaks and ample break spaces for employees wearing PPE.
- Request expansion of hours when construction is allowed.

## **HOTELS**

*Please note that all businesses must follow protocols as outlined in “Representative Mitigation Protocols” in the main document above, including: social distancing, personal protective equipment, employee management and monitoring, sanitation, and disinfection.*

NJ Hospitality & Restaurant Association Guidance:

[https://www.njrha.org/uploads/1/1/3/8/113818341/njrha-safe\\_stay\\_reopening\\_nj\\_hotels.pdf](https://www.njrha.org/uploads/1/1/3/8/113818341/njrha-safe_stay_reopening_nj_hotels.pdf)

Local Industry Input/Guidance:

- Support flexible workplace accommodations for those impacted.
- Provide frequent breaks and ample break spaces for employees wearing PPE.
- Develop and employ capacity management systems for common areas.
- Leverage outdoor spaces for dining and beverage consumption.
- Consider reserving on-property dining facilities to guests only (no public).

## **PUBLIC SPACE: BOARDWALKS/COMMERCIAL RECREATIONAL ATTRACTIONS**

*Please note that all businesses must follow protocols as outlined in “Representative Mitigation Protocols” in the main document above, including: social distancing, personal protective equipment, employee management and monitoring, sanitation, and disinfection.*

“Safe Play” Reopening Guidelines from NJ Restaurant & Hospitality Association & NJ Attractions Association: <https://files.constantcontact.com/dc6aeac6001/a237764c-bb53-4f57-a99a-b795aa4785af.pdf>

World Waterpark Association Guidance: [https://www.waterparks.org/web/Resources/COVID-19/web/Tagged\\_Content/Hot\\_Topics/Coronavirus.aspx?hkey=058be8d3-21ea-4ff9-9a9d-720d6a5b1d4d](https://www.waterparks.org/web/Resources/COVID-19/web/Tagged_Content/Hot_Topics/Coronavirus.aspx?hkey=058be8d3-21ea-4ff9-9a9d-720d6a5b1d4d)

New Jersey Restaurant and Hospitality Association Guidance:  
[https://www.njrha.org/uploads/1/1/3/8/113818341/njrha-safe\\_dining\\_re-re-opening\\_plan.pdf](https://www.njrha.org/uploads/1/1/3/8/113818341/njrha-safe_dining_re-re-opening_plan.pdf)

## **RECREATIONAL FISHING / SIGHTSEEING VESSELS**

*Please note that all businesses must follow protocols as outlined in “Representative Mitigation Protocols” in the main document above, including: social distancing, personal protective equipment, employee management and monitoring, sanitation, and disinfection.*

Local Industry input/Guidance:

- Set up social distancing ‘pods’ on board; those who arrive together can be in same pod.
- Provide adequate sanitation supplies for COVID purposes (hand sanitizer, etc.) for guests and employees.
- Consider online ticket sales to minimize hand-to-hand transactions; limit cash transactions; install Plexiglas on ticket booth window.
- Set up large waiting areas for groups seeking to board vessel.
- Create and maintain a cleaning and decontamination log to ensure vessel sanitation.
- Passenger logs will have passenger telephone numbers to be used for tracing, if necessary.
- Require customers to sanitize hands before boarding vessel.
- Restrooms locked and sanitized after each use.
- No sales of snacks or beverages on the vessels.
- All equipment used by customers will be sanitized by crew after each trip.

## **RESTAURANTS**

*Please note that all businesses must follow protocols as outlined in “Representative Mitigation Protocols” in the main document above, including: social distancing, personal protective equipment, employee management and monitoring, sanitation, and disinfection.*

National Restaurant Association COVID-19 Reopening Guidance: <https://restaurant.org/covid19>

NJ Hospitality & Restaurant Association Guidance:

[https://www.njrha.org/uploads/1/1/3/8/113818341/njrha-safe dining re- re-opening plan.pdf](https://www.njrha.org/uploads/1/1/3/8/113818341/njrha-safe_dining_re-re-opening_plan.pdf)

Local Industry Input/Guidance:

- Leverage outdoor space to expand outdoor seating.
- Support flexible workplace accommodations for those impacted.
- Provide frequent breaks and ample break spaces for employees wearing PPE.
- For restaurants affiliated with a hotel, consider reserving on-property dining facilities to guests only (no public).
- Provide single use towels for each table turn.
- Institute one-way movement using floor markers and signs.
- Implement staggered shifts for all possible workers.
- Display proper hygiene posters in multiple locations to remind workers and patrons of proper procedures.
- Consider establishing “Cape May County Promise” for businesses who pledge to adhere to high standards for operations.

## **RETAIL**

*Please note that all businesses must follow protocols as outlined in “Representative Mitigation Protocols” in the main document above, including: social distancing, personal protective equipment, employee management and monitoring, sanitation, and disinfection.*

National Retail Federation - Path to Reopen Retail: <https://nrf.com/resources/operation-open-doors>

Local Input/Guidance:

- Use capacity management systems to implement social distancing requirements.
- Consider use of outdoor areas to increase square footage of sales area.
- Consider special hours for senior citizens or high-risk individuals.

## **REAL ESTATE**

*Please note that all businesses must follow protocols as outlined in “Representative Mitigation Protocols” in the main document above, including: social distancing, personal protective equipment, employee management and monitoring, sanitation, and disinfection.*

NJ Realtors Guidance: <https://www.njrealtor.com/covid19/>

National Association of Realtors Guidance: <https://www.nar.realtor/coronavirus>

Ocean City Board of Realtors Guidance: <https://ocbor.com/press-releases-home-menu.html>

Local Input/Guidance:

- Establish minimum requirements for
  - Check In / Check Out
  - Changeover Cleaning
  - Expand time allowed between check out and check in to allow for proper cleaning time

- Curb side or mobile check in / check out (drop box for keys for check-out).
- Rentals void of pillows, blankets, comforters; tenant must provide.
- Utilize protective mattress covers.
- Agents to convey standards to property owners; consider including standards in future rental agreements.

### **SERVICE BUSINESSES (BARBERSHOPS, NAIL SALONS, GYMS)**

*Please note that all businesses must follow protocols as outlined in “Representative Mitigation Protocols” in the main document above, including: social distancing, personal protective equipment, employee management and monitoring, sanitation, and disinfection.*

#### Local Input/Guidance:

- Refrain from providing reading materials in waiting areas, or any other items meant to pass from person-to-person.
- Sanitize each work station after every client with disinfectant.
- Capes must be single use and washed after every client with disinfecting laundry detergent.
- Recommend one client in facility per technician (no waiting clients).
- Workstations should be 6 feet apart.
- Every client comes in with a mask and every operator wears a mask.
- Every client asked to wash their hands when arriving.
- Light switches, door knobs and other frequently touched surfaces sanitized repeatedly throughout the day.
- Take temperatures of customers before entering.

### **TECHNOLOGY**

*Please note that all businesses must follow protocols as outlined in “Representative Mitigation Protocols” in the main document above, including: social distancing, personal protective equipment, employee management and monitoring, sanitation, and disinfection.*

#### Local Input/Guidance:

- Institute flexible workplace environments, including work from home if possible/practicable.
- Practice social distancing, hygiene, workplace cleanliness, etc.
- Keep doors and windows open during good weather.
- Request employees to practice social distancing and responsible behavior.
- Bring lunch from home; avoid frequenting public stores on lunch break.
- Encourage employers to provide antibody testing for employees and members of employees’ households.
- Source products and services locally, inasmuch as possible to help mitigate supply chain challenges.

### **WINERIES**

*Please note that all businesses must follow protocols as outlined in “Representative Mitigation Protocols” in the main document above, including: social distancing, personal protective equipment, employee management and monitoring, sanitation, and disinfection.*

NJ Hospitality & Restaurant Association Guidance:

[https://www.njrha.org/uploads/1/1/3/8/113818341/njrha-safe\\_dining\\_re-re-opening\\_plan.pdf](https://www.njrha.org/uploads/1/1/3/8/113818341/njrha-safe_dining_re-re-opening_plan.pdf)

Local Input/Guidance:

- Support flexible workplace accommodations for those impacted.
- Same maximum occupancy as bars and restaurants: maximum capacity of 75% for outdoor spaces; 65% for indoor spaces.

## **APPENDIX TWO: REOPENING TABLE**

This appendix contains a table with recommended dates of reopening, minimum mitigation protocol items, as well as limitations or restrictions that require State modification as a prerequisite, for various industries.



# Appendix Two: Reopening Table

Recommended Date:	Industry/Location:	Operating Practices Require:	Governmental Status:
Monday, June 22	Hotels (Operating at Full Capacity)	<ul style="list-style-type: none"> <li>Adjusting operating practices to:                             <ul style="list-style-type: none"> <li>- Permit up to 100% of capacity</li> <li>- Requiring adherence to social distancing, sanitation best practices including wearing PPE where appropriate, and the New Jersey Restaurant and Hospitality Association guidelines: "Stay Safe" for safe operation</li> </ul> </li> <li>Requiring adherence to social distancing and crowd-size requirements, sanitation best practices including wearing PPE where appropriate, and any industry-specific guidance provided by government or trade association</li> </ul>	<ul style="list-style-type: none"> <li>- To be permitted by order of the Cape May County Board of Chosen Freeholders rescinding or amending Resolution 250-20</li> <li>- Requires lifting of NJ Stay-at-Home Order (EO 107), or amending to include exemptions therein, permitting non-essential travel</li> <li>- Currently Permitted under NJ Stay-at-Home Order: EO 107</li> </ul>
Now	Marinas	<ul style="list-style-type: none"> <li>Requiring adherence to social distancing and crowd-size requirements, sanitation best practices including wearing PPE where appropriate, and any industry-specific guidance provided by government or trade association</li> </ul>	<ul style="list-style-type: none"> <li>- Federally supported if health situation satisfies entering into PHASE ONE of the <i>Federal Opening Up America Again</i> Guidelines</li> <li>- Requires lifting of NJ Stay-at-Home Order, or amending to include exemptions therein, permitting non-essential business</li> <li>- Requires Municipal Permissions</li> <li>- Currently Permitted by the State under NJ Stay-at-Home Order: EO 107, Section 2, Exception 6</li> </ul>
Tuesday, May 26	Museums, Historic Sites, Tour Groups, and Jetney Services	<ul style="list-style-type: none"> <li>Requiring adherence to social distancing and crowd-size requirements, sanitation best practices including wearing PPE where appropriate, and any industry-specific guidance provided by government or trade association</li> </ul>	<ul style="list-style-type: none"> <li>- Federally supported if health situation satisfies entering into PHASE ONE of the <i>Federal Opening Up America Again</i> Guidelines</li> <li>- Requires lifting of NJ Stay-at-Home Order, or amending to include exemptions therein, permitting non-essential business</li> <li>- Requires Municipal Permissions</li> <li>- Currently Permitted by the State under NJ Stay-at-Home Order: EO 107, Section 2, Exception 6</li> </ul>
Now	Public Space: Beaches (Recreational Access)	<ul style="list-style-type: none"> <li>Limiting access to active recreation, including walking, jogging, fishing, and other activities that can only be accomplished with appropriate social distancing</li> </ul>	<ul style="list-style-type: none"> <li>- Federally supported if health situation satisfies entering into PHASE ONE of the <i>Federal Opening Up America Again</i> Guidelines</li> <li>- Requires lifting of NJ Stay-at-Home Order, or amending to include exemptions therein, permitting non-essential travel</li> <li>- Requires Municipal Permissions</li> <li>- Currently Permitted by the State under NJ Stay-at-Home Order: EO 107, Section 2, Exception 6</li> </ul>
Not Prior to Monday, June 1	Public Space: Beaches (Full Access)	<ul style="list-style-type: none"> <li>Open for active and passive recreation access that can be accomplished with appropriate social distancing</li> </ul>	<ul style="list-style-type: none"> <li>- Federally supported if health situation satisfies entering into PHASE ONE of the <i>Federal Opening Up America Again</i> Guidelines</li> <li>- Requires lifting of NJ Stay-at-Home Order, or amending to include exemptions therein, permitting non-essential travel</li> <li>- Requires Municipal Permissions</li> <li>- Currently Permitted by the State under NJ Stay-at-Home Order: EO 107, Section 2, Exception 6</li> </ul>
Now	Public Space: Boardwalks (Restaurant Access)	<ul style="list-style-type: none"> <li>Limiting use of boardwalk to accessing essential businesses, such as take-out food</li> </ul>	<ul style="list-style-type: none"> <li>- Federally supported if health situation satisfies entering into PHASE ONE of the <i>Federal Opening Up America Again</i> Guidelines</li> <li>- Requires lifting of NJ Stay-at-Home Order, or amending to include exemptions therein, permitting non-essential travel</li> <li>- Requires Municipal Permissions</li> <li>- Currently Permitted by the State under NJ Stay-at-Home Order: EO 107, Section 2, Exception 6</li> </ul>
Monday, May 11	Public Space: Boardwalks (Recreational Access)	<ul style="list-style-type: none"> <li>Limiting access to active recreation, including walking, jogging, and other activities that can only be accomplished with appropriate social distancing</li> </ul>	<ul style="list-style-type: none"> <li>- Federally supported if health situation satisfies entering into PHASE ONE of the <i>Federal Opening Up America Again</i> Guidelines</li> <li>- Requires lifting of NJ Stay-at-Home Order, or amending to include exemptions therein, permitting non-essential travel</li> <li>- Requires Municipal Permissions</li> <li>- Currently Permitted by the State under NJ Stay-at-Home Order: EO 107, Section 2, Exception 6</li> </ul>
Monday, June 1	Public Space: Boardwalks / Commercial Recreational Attractions	<ul style="list-style-type: none"> <li>Requiring adherence to social distancing, sanitation best practices including wearing PPE where appropriate, and any additional guidance</li> </ul>	<ul style="list-style-type: none"> <li>- Federally supported if health situation satisfies entering into PHASE ONE of the <i>Federal Opening Up America Again</i> Guidelines</li> <li>- Requires lifting of NJ Stay-at-Home Order, or amending to include exemptions therein, permitting non-essential travel</li> <li>- Permitted by NJ Order Concerning Parks, Golf, and Campground (EO 133)</li> <li>- Requires Municipal Permissions</li> <li>- Permitted by NJ Order Concerning Parks, Golf, and Campground (EO 133)</li> </ul>
Now	Public Space: State & County Parks	<ul style="list-style-type: none"> <li>Limiting access to active recreation, including walking, jogging, and other activities that can only be accomplished with appropriate social distancing</li> </ul>	<ul style="list-style-type: none"> <li>- Federally supported if health situation satisfies entering into PHASE ONE of the <i>Federal Opening Up America Again</i> Guidelines</li> <li>- Requires lifting of NJ Stay-at-Home Order, or amending to include exemptions therein, permitting non-essential travel</li> <li>- Requires Municipal Permissions</li> <li>- Permitted by NJ Order Concerning Parks, Golf, and Campground (EO 133)</li> </ul>
Monday, May 11	Public Space: Municipal Parks, Bike Paths, Playgrounds	<ul style="list-style-type: none"> <li>Limiting access to active recreation, including walking, jogging, and other activities that can only be accomplished with appropriate social distancing</li> </ul>	<ul style="list-style-type: none"> <li>- Federally supported if health situation satisfies entering into PHASE ONE of the <i>Federal Opening Up America Again</i> Guidelines</li> <li>- Requires lifting of NJ Stay-at-Home Order, or amending to include exemptions therein, permitting non-essential travel</li> <li>- Requires Municipal Permissions</li> <li>- Permitted by NJ Order Concerning Parks, Golf, and Campground (EO 133)</li> </ul>
Now	Public Space: County Zoo	<ul style="list-style-type: none"> <li>Requiring adherence to social distancing and crowd-size requirements, sanitation best practices including wearing PPE where appropriate, and any industry-specific guidance provided by government or trade association</li> </ul>	<ul style="list-style-type: none"> <li>- Federally supported if health situation satisfies entering into PHASE ONE of the <i>Federal Opening Up America Again</i> Guidelines</li> <li>- Requires lifting of NJ Stay-at-Home Order, or amending to include exemptions therein, permitting non-essential travel</li> <li>- Currently Permitted under NJ Stay-at-Home Order: EO 107, Section 8</li> </ul>
Monday, May 18	Recreational Fishing / Sightseeing Vessels	<ul style="list-style-type: none"> <li>Adjusting operating practices to:                             <ul style="list-style-type: none"> <li>- Permit only 50% of capacity or distancing of groups 6 feet apart, whichever provides the greater social distancing between groups</li> <li>- Requiring adherence to social distancing, sanitation best practices including wearing PPE where appropriate, and any industry-specific guidance provided by government or trade association</li> </ul> </li> <li>Only permitted to self take out; must adhere to social distancing, sanitation best practices including wearing PPE where appropriate, and any industry-specific guidance provided by government or trade association</li> </ul>	<ul style="list-style-type: none"> <li>- Federally supported if health situation satisfies entering into PHASE ONE of the <i>Federal Opening Up America Again</i> Guidelines</li> <li>- Requires lifting of NJ Stay-at-Home Order (EO 107), or amending to include exemptions therein, permitting non-essential travel</li> <li>- Currently Permitted under NJ Stay-at-Home Order: EO 107, Section 8</li> </ul>
Now	Restaurants (Take Out Only)	<ul style="list-style-type: none"> <li>Adjusting operating practices to:                             <ul style="list-style-type: none"> <li>- Maximum capacity of either 75% of International Building Fire Marshall Code or distancing all tables 6 feet apart, whichever provides the greater social distancing between groups (excluding private rooms)</li> <li>- May work with local governments to gain access to outdoor areas for service</li> <li>- May NOT engage in events or parties that would violate social distancing or other close contact</li> </ul> </li> <li>Requiring adherence to social distancing, sanitation best practices including wearing PPE where appropriate, and the New Jersey Restaurant and Hospitality Association guidelines: "Stay Dining" for safe operation</li> </ul>	<ul style="list-style-type: none"> <li>- Federally supported if health situation satisfies entering into PHASE ONE of the <i>Federal Opening Up America Again</i> Guidelines</li> <li>- Requires lifting of NJ Stay-at-Home Order (EO 107), or amending to include exemptions therein, permitting sit-down dining</li> </ul>
Tuesday, May 26	Restaurants (Outdoor Dining)	<ul style="list-style-type: none"> <li>Adjusting operating practices to:                             <ul style="list-style-type: none"> <li>- Maximum capacity of either 75% of International Building Fire Marshall Code or distancing all tables 6 feet apart, whichever provides the greater social distancing between groups (excluding private rooms)</li> <li>- May work with local governments to gain access to outdoor areas for service</li> <li>- May NOT engage in events or parties that would violate social distancing or other close contact</li> </ul> </li> <li>Requiring adherence to social distancing, sanitation best practices including wearing PPE where appropriate, and the New Jersey Restaurant and Hospitality Association guidelines: "Stay Dining" for safe operation</li> </ul>	<ul style="list-style-type: none"> <li>- Federally supported if health situation satisfies entering into PHASE ONE of the <i>Federal Opening Up America Again</i> Guidelines</li> <li>- Requires lifting of NJ Stay-at-Home Order (EO 107), or amending to include exemptions therein, permitting sit-down dining</li> </ul>
Monday, June 1	Restaurants (Indoor Dining)	<ul style="list-style-type: none"> <li>Adjusting operating practices to:                             <ul style="list-style-type: none"> <li>- Maximum capacity of either 65% of International Building Fire Marshall Code or distancing all tables 6 feet apart, whichever provides the greater social distancing between groups (excluding private rooms)</li> <li>- May work with local governments to gain access to outdoor areas for service</li> <li>- May NOT engage in events or parties that would violate social distancing or other close contact</li> </ul> </li> <li>Requiring adherence to social distancing, sanitation best practices including wearing PPE where appropriate, and the New Jersey Restaurant and Hospitality Association guidelines: "Stay Dining" for safe operation</li> <li>Must adhere to social distancing, sanitation best practices including wearing PPE where appropriate, and any industry-specific guidance provided by government or trade association</li> </ul>	<ul style="list-style-type: none"> <li>- Federally supported if health situation satisfies entering into PHASE ONE of the <i>Federal Opening Up America Again</i> Guidelines</li> <li>- Requires lifting of NJ Stay-at-Home Order, or amending to include exemptions therein, permitting sit-down dining</li> <li>- Currently Permitted under NJ Stay-at-Home Order: EO 107, Section 7</li> </ul>
Now	Retail (Essential)	<ul style="list-style-type: none"> <li>Only permitted to sell by pick-up; must adhere to social distancing, sanitation best practices including wearing PPE where appropriate, and any industry-specific guidance provided by government or trade association</li> </ul>	<ul style="list-style-type: none"> <li>- Federally supported if health situation satisfies entering into PHASE ONE of the <i>Federal Opening Up America Again</i> Guidelines</li> <li>- Requires lifting of NJ Stay-at-Home Order (EO 107), or amending to include exemptions therein, permitting non-essential retail purchases</li> </ul>
Monday, May 11	Retail (Non-Essential; Pick Up)	<ul style="list-style-type: none"> <li>Only permitted to sell by pick-up; must adhere to social distancing, sanitation best practices including wearing PPE where appropriate, and any industry-specific guidance provided by government or trade association</li> </ul>	<ul style="list-style-type: none"> <li>- Federally supported if health situation satisfies entering into PHASE ONE of the <i>Federal Opening Up America Again</i> Guidelines</li> <li>- Requires lifting of NJ Stay-at-Home Order (EO 107), or amending to include exemptions therein, permitting non-essential retail purchases</li> </ul>



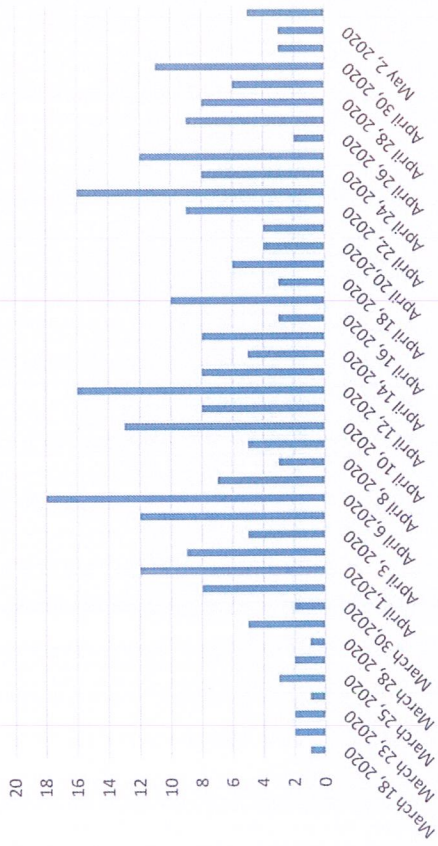
Appendix Two: Reopening Table

Recommended Date:	Industry/Location:	Operating Practices Require:	Governmental Status:
Monday, June 1	<b>Retail</b> (Non-Essential; In-Store Shopping)	<ul style="list-style-type: none"> <li>- Adjusting operating practices to:</li> <li>- Limiting capacity to the number of people in the store at one time that can practically maintain social distancing of six feet</li> <li>- Requiring adherence to social distancing, sanitation best practices including wearing PPE where appropriate, and any industry-specific guidance provided by government or trade association</li> </ul>	<ul style="list-style-type: none"> <li>- Federally supported if health situation satisfies entering into PHASE ONE of the <i>Federal Opening Up America Again</i> Guidelines</li> <li>- Requires lifting of NJ Stay-at-Home Order (EO 107), or amending to include exemptions therein, permitting in-store retail purchases</li> </ul>
Monday, May 11	<b>Rentals</b> (Seasonal; Duration Greater than 30 days, including Seasonal Employees)	<ul style="list-style-type: none"> <li>- Requiring adherence to social distancing, sanitation best practices including wearing PPE where appropriate, and the New Jersey Realty Association guidelines for safe operation of real estate offices and rental properties</li> </ul>	<ul style="list-style-type: none"> <li>- To be permitted by order of the Cape May County Board of Chosen Freeholders rescinding or amending Resolution 250-20</li> <li>- Requires lifting of NJ Stay-at-Home Order (EO 107), or amending to include exemptions therein, permitting non-essential travel</li> </ul>
Monday, June 1	<b>Rentals</b> (Duration Less than 30 days)	<ul style="list-style-type: none"> <li>- Requiring adherence to social distancing, sanitation best practices including wearing PPE where appropriate, and the New Jersey Realty Association guidelines for safe operation of real estate offices and rental properties</li> </ul>	<ul style="list-style-type: none"> <li>- To be permitted by order of the Cape May County Board of Chosen Freeholders rescinding or amending Resolution 250-20</li> <li>- Requires lifting of NJ Stay-at-Home Order (EO 107), or amending to include exemptions therein, permitting non-essential travel</li> </ul>
Monday, May 18	<b>Service Businesses</b> (Barbershops, Nail Salons, Gyms, etc.)	<ul style="list-style-type: none"> <li>- Adjusting operating practices to:</li> <li>- Limiting capacity to the number of people at one time that can practically maintain social distancing of six feet between clients</li> <li>- Requiring adherence to social distancing, sanitation best practices including wearing PPE where appropriate, and any industry-specific guidance provided by government or trade association</li> </ul>	<ul style="list-style-type: none"> <li>- Federally supported if health situation satisfies entering into PHASE ONE of the <i>Federal Opening Up America Again</i> Guidelines</li> <li>- Requires lifting of NJ Stay-at-Home Order (EO 107), or amending to include exemptions therein, permitting service businesses such as barbershops, nail salons, and gyms</li> </ul>
Now	<b>Technology</b>	<ul style="list-style-type: none"> <li>- Requiring adherence to social distancing and crowd-size requirements, sanitation best practices including wearing PPE where appropriate, and any industry-specific guidance provided by government or trade association</li> </ul>	<ul style="list-style-type: none"> <li>- Currently Permitted under NJ Stay-at-Home Order: EO 107, Section 7</li> </ul>
Now	<b>Wineries</b> (Take Out Only)	<ul style="list-style-type: none"> <li>- Only permitted to sell take out; must adhere to social distancing, sanitation best practices including wearing PPE where appropriate, and any industry-specific guidance provided by government or trade association</li> </ul>	<ul style="list-style-type: none"> <li>- Currently Permitted under NJ Stay-at-Home Order: EO 107, Section 8</li> </ul>
Tuesday, May 26	<b>Wineries</b> (Outdoor Sales)	<ul style="list-style-type: none"> <li>- Adjusting operating practices to:</li> <li>- Maximum capacity of either 75% of International Building Fire Marshall Code or distancing all tables 6 feet apart, whichever provides the greater social distancing between groups (excluding private rooms)</li> <li>- May work with local governments to gain access to outdoor areas for service</li> <li>- May NOT engage in events or parties that would violate social distancing or other close contact</li> <li>- May only operate until midnight</li> <li>- Requiring adherence to social distancing, sanitation best practices including wearing PPE where appropriate, and the New Jersey Restaurant and Hospitality Association guidelines: "Stay Dining" for safe operation</li> </ul>	<ul style="list-style-type: none"> <li>- Federally supported if health situation satisfies entering into PHASE TWO of the <i>Federal Opening Up America Again</i> Guidelines</li> <li>- Requires lifting of NJ Stay-at-Home Order (EO 107), or amending to include exemptions therein, permitting on-site sales</li> </ul>
Monday, June 1	<b>Wineries</b> (Indoor Sales)	<ul style="list-style-type: none"> <li>- Adjusting operating practices to:</li> <li>- Maximum capacity of either 65% of International Building Fire Marshall Code or distancing all tables 6 feet apart, whichever provides the greater social distancing between groups (excluding private rooms)</li> <li>- May work with local governments to gain access to outdoor areas for service</li> <li>- May NOT engage in events or parties that would violate social distancing or other close contact</li> <li>- May only operate until midnight</li> <li>- Requiring adherence to social distancing, sanitation best practices including wearing PPE where appropriate, and the New Jersey Restaurant and Hospitality Association guidelines: "Stay Dining" for safe operation</li> </ul>	<ul style="list-style-type: none"> <li>- Federally supported if health situation satisfies entering into PHASE TWO of the <i>Federal Opening Up America Again</i> Guidelines</li> <li>- Requires lifting of NJ Stay-at-Home Order (EO 107), or amending to include exemptions therein, permitting on-site sales</li> </ul>

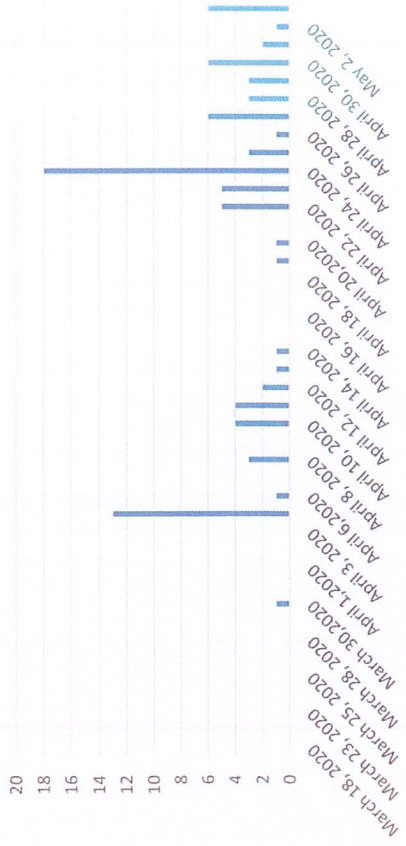
### **APPENDIX THREE: CAPE MAY COUNTY COVID+ DATA**

This appendix contains graphs showing Cape May County's Covid+ data from March 18 to May 3, with separate visualizations comparing overall data to cases from long-term care facilities.

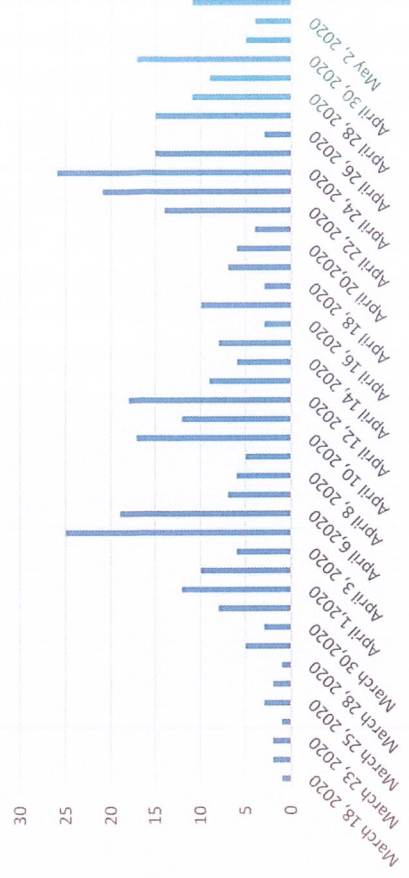
Community Covid-19 Cases



Positive Long Term Care



Total Combined Positive Covid-19 Cases  
March 18 to May 3



# Cape May County Covid-19 Cases March 18 to May 3

