



NEWS RELEASE

U.S. ARMY CORPS OF ENGINEERS

BUILDING STRONG®

Contact:
Stephen.Rochette@usace.army.mil

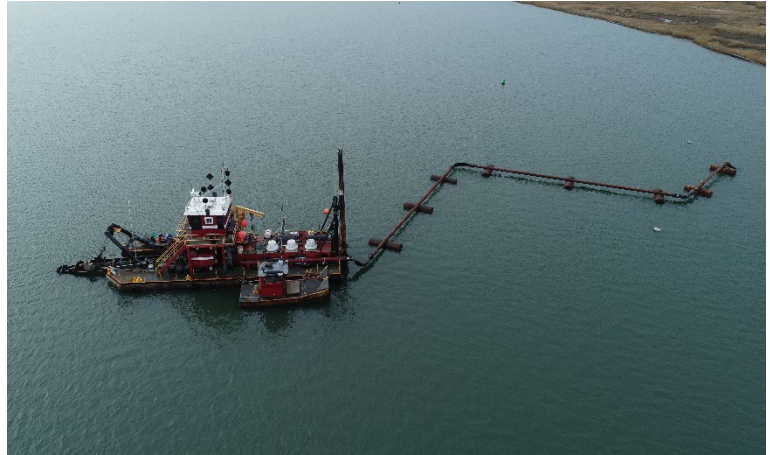
Army Corps issues advisory for New Jersey Intracoastal Waterway dredging

PHILADELPHIA (Sept. 15, 2020) – The U.S. Army Corps of Engineers' Philadelphia District has issued an advisory regarding ongoing dredging along the New Jersey Intracoastal Waterway.

The Army Corps' contractor Barnegat Bay Dredging Company is conducting dredging in the federal channel of the waterway between markers 386 to 397 (west of Avalon and Stone Harbor in Cape May County, NJ).

The Dredge Fullerton (pictured) is dredging and pumping sediment to Gull Island. The smaller Dredge

Montgomery is dredging and pumping sediment to Sturgeon Island. Mariners should be aware of pipeline and associated equipment and proceed with caution in the area. Work is estimated to continue through late October.



The Dredge Fullerton, owned and operated by Barnegat Bay Dredging Co., working along the New Jersey Intracoastal Waterway in 2018

About the Project

The Army Corps' Philadelphia District maintains the 117-mile long New Jersey Intracoastal Waterway. Sections of the waterway are periodically dredged to enable maritime navigation. When the dredged material is clean, the Army Corps looks for opportunities to use the material beneficially.

In April 2019, the Army Corps' Philadelphia District partnered with the USACE, Engineering Research & Development Lab, New Jersey Division of Fish & Wildlife and The Wetlands Institute to launch the Seven Mile Island Innovation Lab. The initiative is designed to advance and improve dredging and marsh restoration techniques in coastal New Jersey through innovative research, collaboration, knowledge sharing and practical application. Gull Island and Sturgeon Island are low lying marsh islands being restored to replace lost marsh habitat for wading birds and enhance marsh resilience for coastal communities. Gull Island is managed by the State of New Jersey as part of the Cape May Wetlands Wildlife Management Area and Sturgeon Island is owned and managed by The Wetlands Institute.